



THE  
CHELSEA  
HARBOUR  
HOTEL  

---

LONDON





THE  
**CHELSEA  
HARBOUR**  
HOTEL  
LONDON

A **WATERFRONT**  
OASIS

**MEETINGS** AT THE  
HIGHEST LEVEL

THE **PERFECT**  
SETTING

WHERE **IDEAS**  
FLOW

REVEL IN STYLE &  
**SOPHISTICATION**

AN OCCASION  
TO **SAVOUR**

THE PERFECT  
**SPACE**

IN A GREAT  
**LOCATION**



## A WATERFRONT OASIS

WELCOME TO LONDON'S ONLY FIVE STAR,  
ALL-SUITE LUXURY HOTEL.

The Chelsea Harbour Hotel is superbly located, within Chelsea Harbour Marina, and offers stunning panoramic views over London and the River Thames. Each of the 158 elegant suites has been thoughtfully designed and offers guests luxurious and contemporary amenities, as well as complete privacy. From here, you can enjoy an exclusive and elegant setting for your business or social event.

Eleven meeting rooms, including the spectacular **Grand Room** and four exclusive penthouses, make The Chelsea Harbour Hotel the perfect choice, whatever the occasion.

**A VENUE LIKE NO OTHER.**





THE  
CHELSEA  
HARBOUR  
HOTEL  
LONDON

A WATERFRONT  
OASIS

MEETINGS AT THE  
HIGHEST LEVEL

THE PERFECT  
SETTING

WHERE IDEAS  
FLOW

REVEL IN STYLE &  
SOPHISTICATION

AN OCCASION  
TO SAVOUR

THE PERFECT  
SPACE

IN A GREAT  
LOCATION



## MEETINGS AT THE HIGHEST LEVEL

PRESTIGE AND PRIVACY ARE COMBINED AT ONE OF LONDON'S MOST UNIQUE VENUES.

Enjoy breathtaking views over London from the hotel's penthouse level in the **Albert** and **Battersea suites**. These suites can be combined to form a single space that can seat up to 80 people. When using these suites, the adjoining Executive Lounge is available for guests to relax and entertain in.

**A DESTINATION FOR SUCCESS.**





THE  
CHELSEA  
HARBOUR  
HOTEL  
LONDON

A WATERFRONT  
OASIS

MEETINGS AT THE  
HIGHEST LEVEL

THE **PERFECT**  
SETTING

WHERE **IDEAS**  
FLOW

REVEL IN STYLE &  
**SOPHISTICATION**

AN OCCASION  
TO **SAVOUR**

THE PERFECT  
**SPACE**

IN A GREAT  
**LOCATION**



## THE **PERFECT** SETTING

OUR EXCLUSIVE HARBOURSIDE LOCATION HELPS TO CREATE A RELAXED ATMOSPHERE.

The **Drakes suite** boasts floor to ceiling windows, offering spectacular marina views and can accommodate up to 140 guests for a dinner dance. The suite has a private terrace where guests can enjoy the fresh air and views across Chelsea Harbour.

Our experienced team are on hand to ensure your event is truly special. Our chefs have designed delectable menus and we can customise them to meet your requirements and suit your tastes. Beyond meeting agendas, we offer a wealth of options to recharge; your guests can rejuvenate in our spa, or with a sightseeing tour, individually tailored to your interests by our expert concierge team.

**AN EVENT TO BE REMEMBERED.**



THE  
**CHELSEA  
HARBOUR**  
HOTEL  
LONDON

A **WATERFRONT**  
OASIS

**MEETINGS** AT THE  
HIGHEST LEVEL

THE **PERFECT**  
SETTING

WHERE **IDEAS**  
FLOW

REVEL IN STYLE &  
**SOPHISTICATION**

AN OCCASION  
TO **SAVOUR**

THE PERFECT  
**SPACE**

IN A GREAT  
**LOCATION**



## WHERE **IDEAS** FLOW

AN INSPIRATIONAL SETTING WITH ALL THE TECHNOLOGY YOU NEED, TO LET YOUR IDEAS FLOW.

All three marina-level meeting suites have floor to ceiling windows looking out on to the marina. Our largest suite, the magnificent **Grand Room**, seats up to 450 delegates for a conference or 500 for dinner and can also be divided so as to accommodate smaller numbers if required. A full-service business centre, with secretarial services and video conferencing facilities is available. Every function suite is fully equipped with the latest audiovisual technology, giving you a wealth of ways to inform, inspire and entertain your guests.

**AN INSPIRATIONAL SETTING.**





THE  
CHELSEA  
HARBOUR  
HOTEL  
LONDON

A WATERFRONT  
OASIS

MEETINGS AT THE  
HIGHEST LEVEL

THE PERFECT  
SETTING

WHERE IDEAS  
FLOW

REVEL IN STYLE &  
SOPHISTICATION

AN OCCASION  
TO SAVOUR

THE PERFECT  
SPACE

IN A GREAT  
LOCATION



## REVEL IN STYLE AND **SOPHISTICATION**

THE CHELSEA HARBOUR HOTEL IS PERFECTLY PLACED TO HOST ANY OCCASION.

Our majestic **Grand Room** seats up to 500 guests for a banquet or wedding breakfast and can also be divided into separate areas for dining and dancing. The adjacent **Grand Foyer** also provides the perfect setting for a welcome reception. For more intimate occasions, choose from the **Bridges** or **Drakes suites**, which have floor to ceiling windows overlooking the marina and the River Thames. The luxurious **Albert** and **Battersea suites**, situated on our exclusive penthouse level, offer magnificent panoramic views over London.

Our specialist team can advise and assist with every aspect of planning and arranging weddings or other special occasions, ensuring no detail is overlooked, and every part of your day is exactly the way you want it.

**A LOCATION TO SUIT ANY OCCASION.**



THE  
**CHELSEA  
HARBOUR**  
HOTEL  
LONDON

A **WATERFRONT**  
OASIS

**MEETINGS** AT THE  
HIGHEST LEVEL

THE **PERFECT**  
SETTING

WHERE **IDEAS**  
FLOW

REVEL IN STYLE &  
**SOPHISTICATION**

AN OCCASION  
TO **SAVOUR**

THE PERFECT  
**SPACE**

IN A GREAT  
**LOCATION**



## AN OCCASION TO **SAVOUR**

AT THE CHELSEA HARBOUR HOTEL, YOU CAN TREAT YOUR GUESTS AND DELEGATES TO A UNIQUE DINING EXPERIENCE.

At Chelsea Riverside Brasserie, you can enjoy everything from a pre-meeting breakfast and morning coffee to a light lunch or formal dinner. With its stunning harbour views and relaxed ambience, The Harbour Bar is perfect for drinks throughout the day, including post-event cocktails, while the riverside terrace offers some of the best alfresco dining that London has to offer. For more intimate events, the **private dining** room can seat up to 12 people.

**CATERING TO YOUR EVERY NEED.**



THE  
**CHELSEA  
 HARBOUR**  
 HOTEL  
 LONDON

A **WATERFRONT**  
 OASIS

**MEETINGS** AT THE  
 HIGHEST LEVEL

THE **PERFECT**  
 SETTING

WHERE **IDEAS**  
 FLOW

REVEL IN STYLE &  
**SOPHISTICATION**

AN OCCASION  
 TO **SAVOUR**

THE PERFECT  
**SPACE**

IN A GREAT  
**LOCATION**

**MEETING  
 ROOMS**

**DRAKES**

PRIVATE DINING  
 ROOM

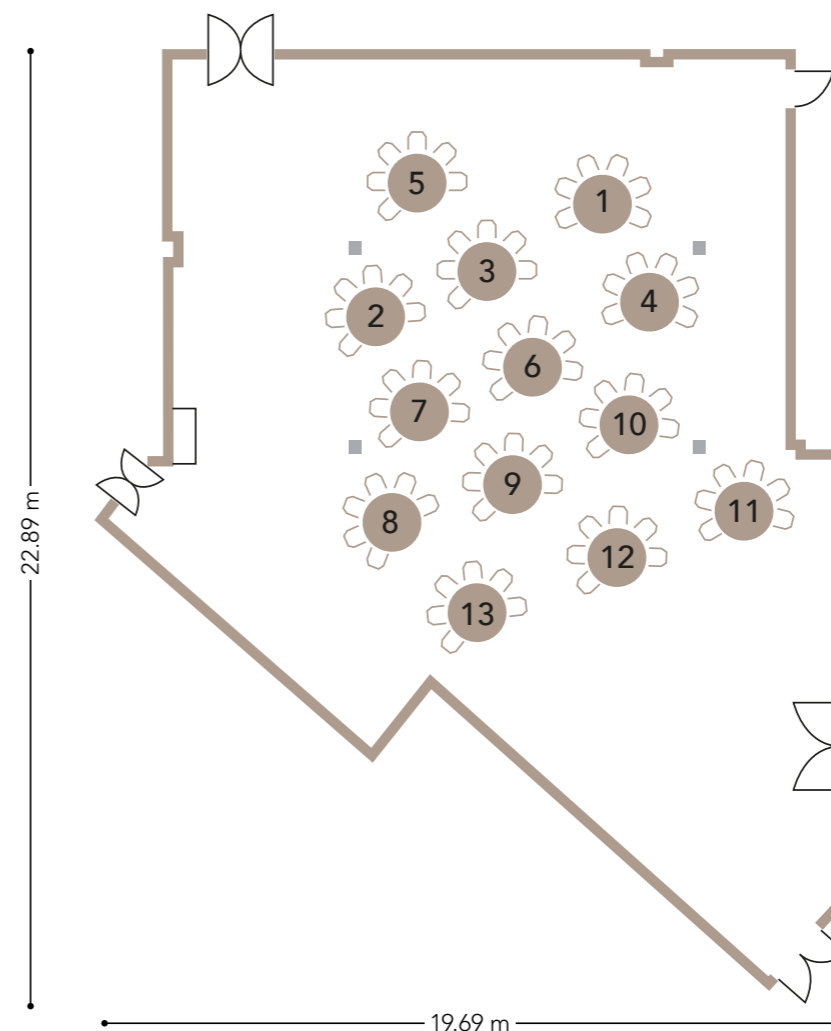
GRAND ROOM  
 1,2,3

GRAND FOYER

GRAND  
 BOARDROOM

THE BRIDGES

BOARDROOM



Room	Theatre	Boardroom	U-shape	Classroom	Cabaret	Reception	Dinner	Dinner Dance
<b>LOBBY LEVEL</b>								
Drakes	180	40	40	100	80	300	180	140

Room	Area sq m	Dimensions m L x W x H	Area sq ft	Dimensions ft L x W x H
<b>LOBBY LEVEL</b>				
Drakes	333	22.89 x 19.69 x 2.49	2,690	63 x 76 x 8.2





THE  
**CHELSEA  
HARBOUR**  
HOTEL  
LONDON

A **WATERFRONT**  
OASIS

**MEETINGS** AT THE  
HIGHEST LEVEL

THE **PERFECT**  
SETTING

WHERE **IDEAS**  
FLOW

REVEL IN STYLE &  
**SOPHISTICATION**

AN OCCASION  
TO **SAVOUR**

THE PERFECT  
**SPACE**

IN A GREAT  
**LOCATION**

**MEETING  
ROOMS**

DRAKES

PRIVATE DINING  
ROOM

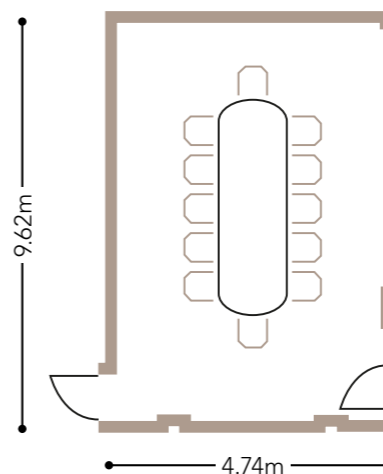
GRAND ROOM  
1,2,3

GRAND FOYER

GRAND  
BOARDROOM

THE BRIDGES

BOARDROOM



Room	Theatre	Boardroom	U-shape	Classroom	Cabaret	Reception	Dinner	Dinner Dance
<b>LOBBY LEVEL</b>								
Private Dining Room	18	12	–	12	8	20	12	–

Room	Area sq m	Dimensions m L x W x H	Area sq ft	Dimensions ft L x W x H
<b>LOBBY LEVEL</b>				
Private Dining Room	32	4.74 x 6.83 x 2.3	355	15.6 x 22.5 x 7.6



THE  
**CHELSEA  
HARBOUR**  
HOTEL  
LONDON

A **WATERFRONT**  
OASIS

**MEETINGS** AT THE  
HIGHEST LEVEL

THE **PERFECT**  
SETTING

WHERE **IDEAS**  
FLOW

REVEL IN STYLE &  
**SOPHISTICATION**

AN OCCASION  
TO **SAVOUR**

THE **PERFECT**  
**SPACE**

IN A GREAT  
**LOCATION**

**MEETING  
ROOMS**

DRAKES

PRIVATE DINING  
ROOM

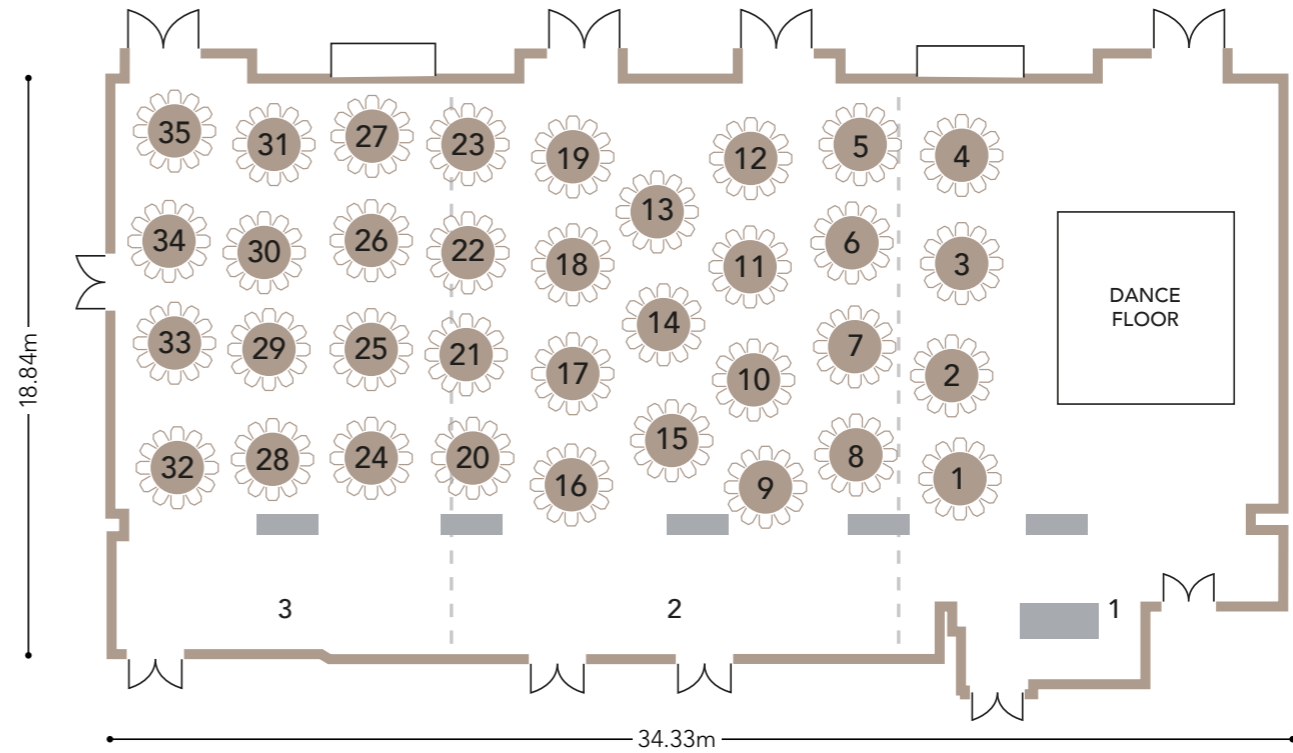
**GRAND ROOM**  
1,2,3

GRAND FOYER

GRAND  
BOARDROOM

THE BRIDGES

BOARDROOM



Room	Theatre	Boardroom	U-shape	Classroom	Cabaret	Reception	Dinner	Dinner Dance
<b>MARINA LEVEL</b>								
Grand Room (1, 2 & 3)	450	-	-	225	270	700	500	450
Grand Room 1	120	40	45	60	72	300	120	90
Grand Room 2	200	40	48	90	96	300	170	120
Grand Room 3	150	40	40	60	72	300	120	90

Room	Area sq m	Dimensions m L x W x H	Area sq ft	Dimensions ft L x W x H
<b>MARINA LEVEL</b>				
Grand Room (1, 2 & 3)	564	34 x 16.6 x 2.9	6,684	113 x 59 x 9.5
Grand Room 1	213	18.84 x 11.35 x 2.9	2,257	61 x 37 x 9.5
Grand Room 2	232	17.89 x 12.99 x 2.9	2,436	58 x 42 x 9.5
Grand Room 3	176	17.89 x 9.88 x 2.9	1,856	58 x 32 x 9.5



THE  
**CHELSEA  
 HARBOUR**  
 HOTEL  
 LONDON

A **WATERFRONT**  
 OASIS

**MEETINGS** AT THE  
 HIGHEST LEVEL

THE **PERFECT**  
 SETTING

WHERE **IDEAS**  
 FLOW

REVEL IN STYLE &  
**SOPHISTICATION**

AN OCCASION  
 TO **SAVOUR**

THE PERFECT  
**SPACE**

IN A GREAT  
**LOCATION**

**MEETING  
 ROOMS**

DRAKES

PRIVATE DINING  
 ROOM

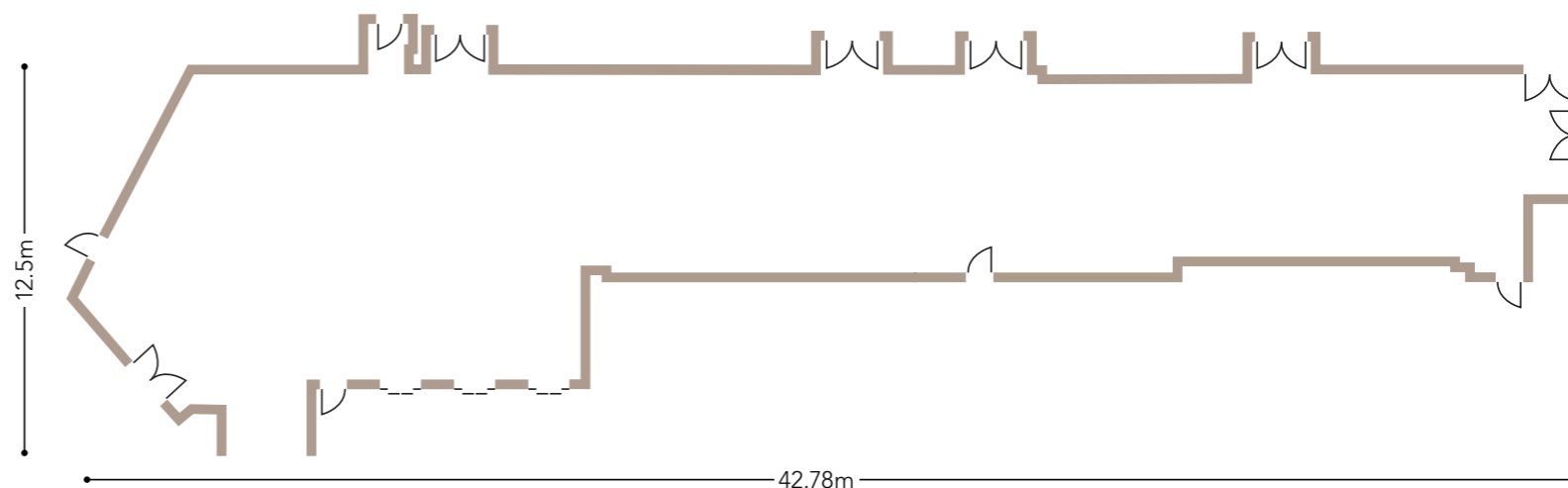
GRAND ROOM  
 1,2,3

GRAND FOYER

GRAND  
 BOARDROOM

THE BRIDGES

BOARDROOM



Room	Theatre	Boardroom	U-shape	Classroom	Cabaret	Reception	Dinner	Dinner Dance
<b>MARINA LEVEL</b>								
Grand Foyer	-	-	-	-	-	500	-	-

Room	Area sq m	Dimensions m L x W x H	Area sq ft	Dimensions ft L x W x H
<b>MARINA LEVEL</b>				
Grand Foyer	266	34 x 10 x 2.3	2,863	113 x 32 x 7.6



THE  
**CHELSEA  
HARBOUR**  
HOTEL  
LONDON

A **WATERFRONT**  
OASIS

**MEETINGS** AT THE  
HIGHEST LEVEL

THE **PERFECT**  
SETTING

WHERE **IDEAS**  
FLOW

REVEL IN STYLE &  
**SOPHISTICATION**

AN OCCASION  
TO **SAVOUR**

THE **PERFECT**  
**SPACE**

IN A GREAT  
**LOCATION**

**MEETING  
ROOMS**

DRAKES

PRIVATE DINING  
ROOM

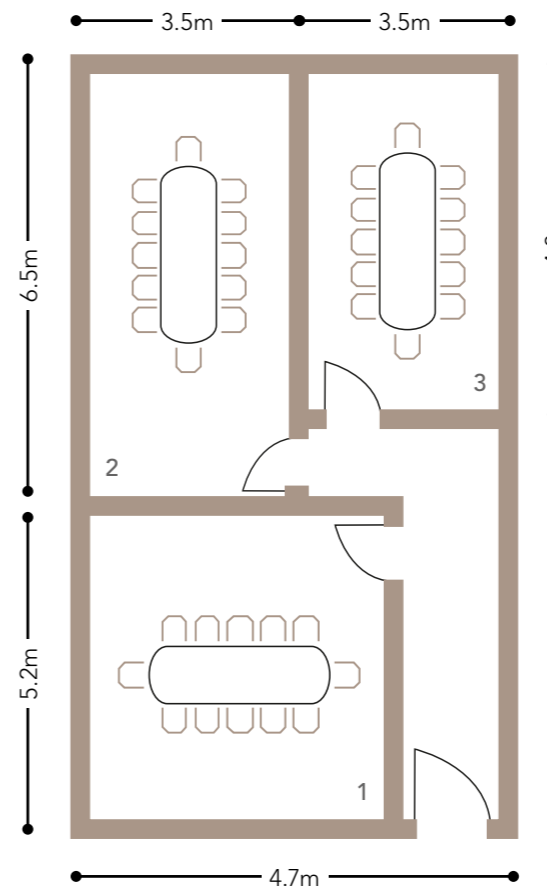
GRAND ROOM  
1,2,3

GRAND FOYER

GRAND  
BOARDROOM

THE BRIDGES

BOARDROOM



Room	Theatre	Boardroom	U-shape	Classroom	Cabaret	Reception	Dinner	Dinner Dance
<b>MARINA LEVEL</b>								
Grand Boardroom 1	-	-	9	9	8	-	-	-
Grand Boardroom 2	24	10	8	12	8	-	-	-
Grand Boardroom 3	24	10	6	12	8	-	-	-

Room	Area sq m	Dimensions m L x W x H	Area sq ft	Dimensions ft L x W x H
<b>MARINA LEVEL</b>				
Grand Boardroom 1	24.44	5.2 x 4.7 x 2.3	263	17 x 15 x 7.6
Grand Boardroom 2	22.75	6.5 x 3.5 x 2.3	244	21 x 11 x 7.6
Grand Boardroom 3	16.80	4.8 x 3.5 x 2.3	180	15 x 11 x 7.6



THE  
**CHELSEA  
 HARBOUR**  
 HOTEL  
 LONDON

A **WATERFRONT**  
 OASIS

**MEETINGS** AT THE  
 HIGHEST LEVEL

THE **PERFECT**  
 SETTING

WHERE **IDEAS**  
 FLOW

REVEL IN STYLE &  
**SOPHISTICATION**

AN OCCASION  
 TO **SAVOUR**

THE **PERFECT**  
**SPACE**

IN A GREAT  
**LOCATION**

**MEETING  
 ROOMS**

DRAKES

PRIVATE DINING  
 ROOM

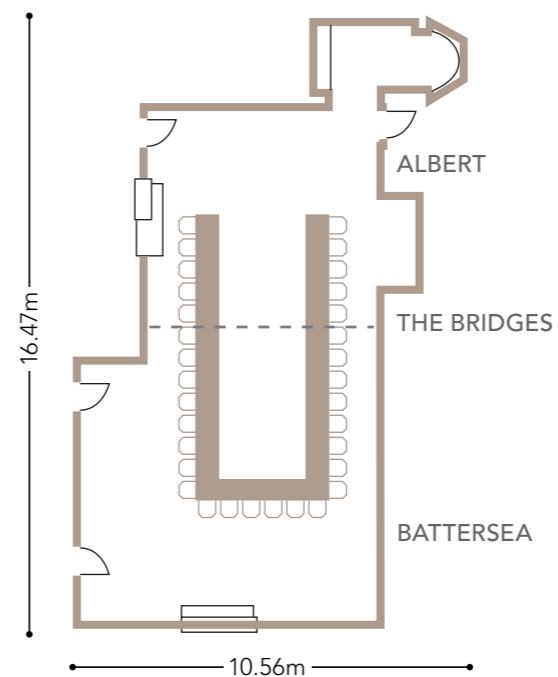
GRAND ROOM  
 1,2,3

GRAND FOYER

GRAND  
 BOARDROOM

THE BRIDGES

BOARDROOM



Room	Theatre	Boardroom	U-shape	Classroom	Cabaret	Reception	Dinner	Dinner Dance
<b>PENTHOUSE LEVEL</b>								
The Bridges	80	30	30	30	42	100	72	-
Albert	25	14	10	12	12	30	16	-
Battersea	60	20	24	24	30	50	48	-

Room	Area sq m	Dimensions m L x W x H	Area sq ft	Dimensions ft L x W x H
<b>PENTHOUSE LEVEL</b>				
The Bridges	119	14.51 x 8.26 x 2.3	1,442	47.60 x 27.09 x 7.6
Albert	37	5.97 x 6.3 x 2.3	613	20.99 x 21.32 x 7.6
Battersea	67	8.13 x 8.26 x 2.3	721	26.60 x 27.09 x 7.6



THE  
**CHELSEA  
 HARBOUR**  
 HOTEL  
 LONDON

A **WATERFRONT**  
 OASIS

**MEETINGS** AT THE  
 HIGHEST LEVEL

THE **PERFECT**  
 SETTING

WHERE **IDEAS**  
 FLOW

REVEL IN STYLE &  
**SOPHISTICATION**

AN OCCASION  
 TO **SAVOUR**

THE PERFECT  
**SPACE**

IN A GREAT  
**LOCATION**

**MEETING  
 ROOMS**

DRAKES

PRIVATE DINING  
 ROOM

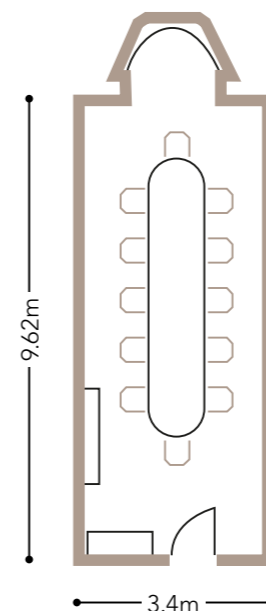
GRAND ROOM  
 1,2,3

GRAND FOYER

GRAND  
 BOARDROOM

THE BRIDGES

**BOARDROOM**



Room	Theatre	Boardroom	U-shape	Classroom	Cabaret	Reception	Dinner	Dinner Dance
<b>PENTHOUSE LEVEL</b>								
Boardroom	-	14	-	-	-	-	16	-

Room	Area sq m	Dimensions m L x W x H	Area sq ft	Dimensions ft L x W x H
<b>PENTHOUSE LEVEL</b>				
Boardroom	32	9.62 x 3.4 x 2.3	333	27.23 x 11.15 x 7.6



THE  
**CHELSEA  
HARBOUR  
HOTEL**  
LONDON

A **WATERFRONT**  
OASIS

**MEETINGS** AT THE  
HIGHEST LEVEL

THE **PERFECT**  
SETTING

WHERE **IDEAS**  
FLOW

REVEL IN STYLE &  
**SOPHISTICATION**

AN OCCASION  
TO **SAVOUR**

THE **PERFECT**  
**SPACE**

IN A GREAT  
**LOCATION**



## IN A GREAT LOCATION

Overground	Underground	Airports	Riverboat
Imperial Wharf 4 minutes walking	Fulham Broadway 10 minutes walking	Heathrow 45 minutes by taxi	Westminster 22 minutes
Clapham Junction 7 minutes by train	Sloane Square 10 minutes by taxi	Gatwick 50 minutes by taxi	Canary Wharf 42 minutes
Victoria 25 minutes by train	Victoria 10 minutes by taxi		
Waterloo 25 minutes by train	Paddington 35 minutes by train		

The Chelsea Harbour Hotel

Chelsea Harbour, London, SW10 0XG T +44 (0) 20 7823 3000 F +44 (0) 20 7300 8405

E [events.chelseaharbour@millenniumhotels.com](mailto:events.chelseaharbour@millenniumhotels.com) W [www.thechelseaharbourhotel.co.uk](http://www.thechelseaharbourhotel.co.uk)

A MILLENNIUM HOTEL



▲ NORTH. MAP NOT TO SCALE. FOR INDICATIVE PURPOSES ONLY.