



THE VENUE  
ROYAL LIVER BUILDING

THE ICONIC WEDDING VENUE



## A WEDDING VENUE THAT NEEDS NO INTRODUCTION

An awe-inspiring building on Liverpool's historic waterfront, The Royal Liver Building creates a dramatic first impression. Raise a toast above the glittering lights of Liverpool and enjoy panoramic views across the River Mersey at The Venue.



## WATCH YOUR DREAMS BECOME REALITY

An extraordinary space on the first floor of the Royal Liver Building, The Venue has been decorated to the highest specification, creating a subtle and sophisticated space for your special day.

Licensed for civil wedding ceremonies and civil partnerships, this unique, contemporary venue provides the perfect spaces for both your ceremony and reception.





## A ROOM WITH A VIEW



The Venue at the Royal Liver Building comes complete with inspiring views across the river Mersey, which can be enjoyed from an adjacent balcony. This is the perfect place to capture the moment before the inimitable backdrop of the City of Liverpool, for the ultimate in photo opportunities.

The balcony is also ideal for welcome drinks as guests arrive. Here canapés can be served before guests move inside for a mouth-watering wedding breakfast.



## FINE DINING



Our preferred caterer Dougherty and Allen specialises in exceptional menus for events. With a focus on bold flavours, the finest seasonal ingredients and fantastic local produce, Dougherty and Allen creates dishes guaranteed to wow your guests. In addition to three course seated wedding breakfasts, Dougherty and Allen offer canapé receptions, hot and cold buffets and drinks menus.



In addition to three course seated wedding breakfasts, Dougherty and Allen offer canapé receptions, hot and cold buffets and drinks menus.

### SAMPLE MENU

Sample three course seated dinner menu.

Hot and cold buffets available plus drinks and canapés reception

### STARTERS

Tian of Whitby bay crab, west coast lobster, mango salsa and dipping sauces

Ballotine of smoked salmon, prawns and lemon mayonnaise

Duck, smoked and confit with rhubarb purée and five spice dressing

Twice baked Cheshire cheese soufflé, honeycomb dressing and Wirral watercress

### MAIN COURSES

Roast chicken, bubble and squeak, roasted seasonal vegetables and chicken jus

Slow cooked beef fillet rolled in summer herbs, with wilted summer greens, roasted shallot and red wine jus

Pan fried Halibut fillet, thyme scented mash, roasted artichoke and caper dressing

Pastry lattice of summer vegetables, sweet pepper purée, herb oil

### DESSERTS

Chocolate mousse with raspberry and vanilla

Picasso Banana and peanut brûlée with glazed banana and crisp

Trio of deserts: lemon, chocolate and berry

Steamed lemon sponge, thyme infused Crème Anglaise





## SETTING THE SCENE



The Venue comes fully equipped with atmospheric lighting, a PA system for speeches, reception and dining furniture and a state of the art kitchen.

Ideal for parties from 50 to 200, The Venue offers fantastic flexibility. Movable wall partitions can be used to create the perfect spaces for weddings of any size.

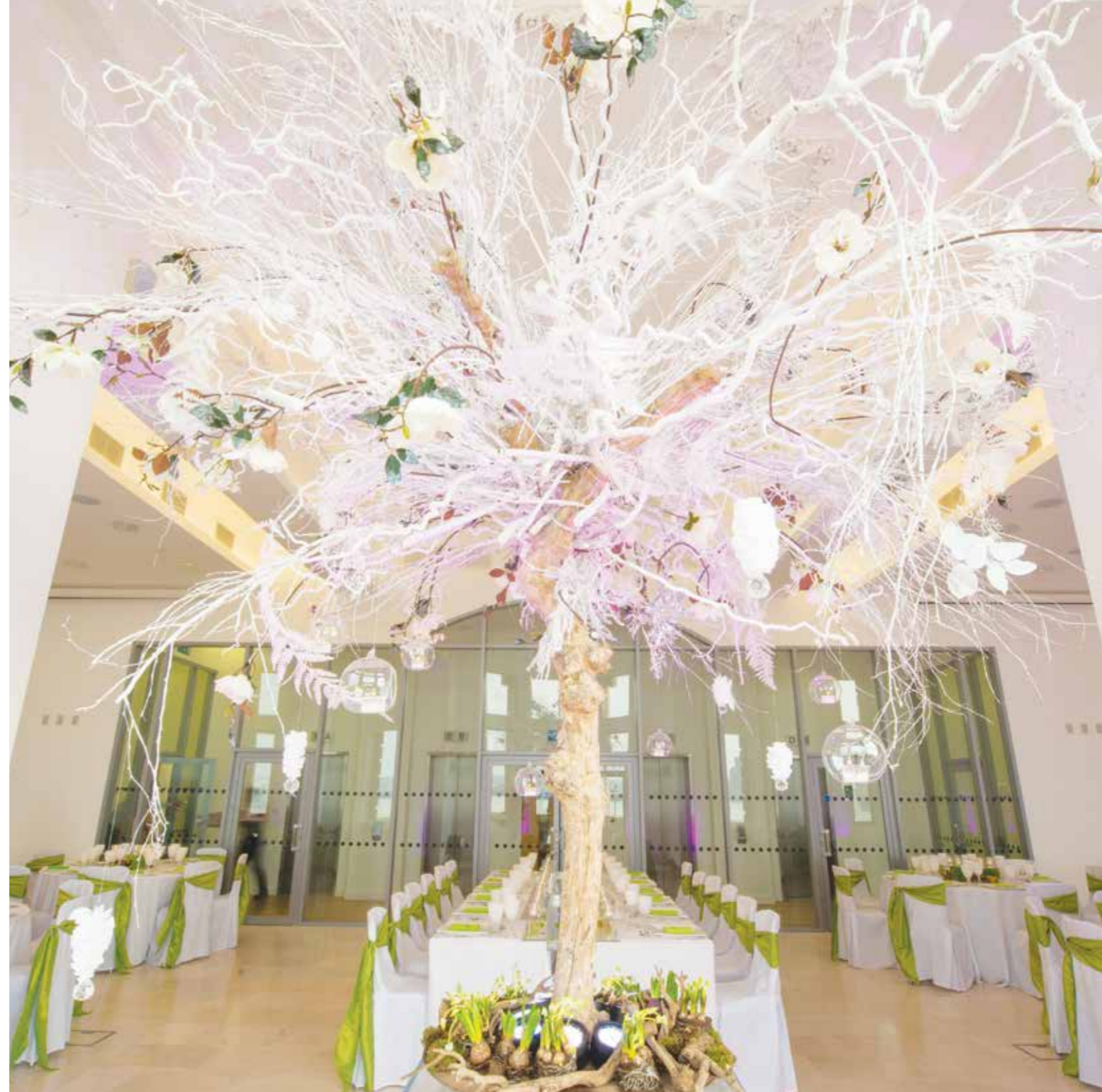


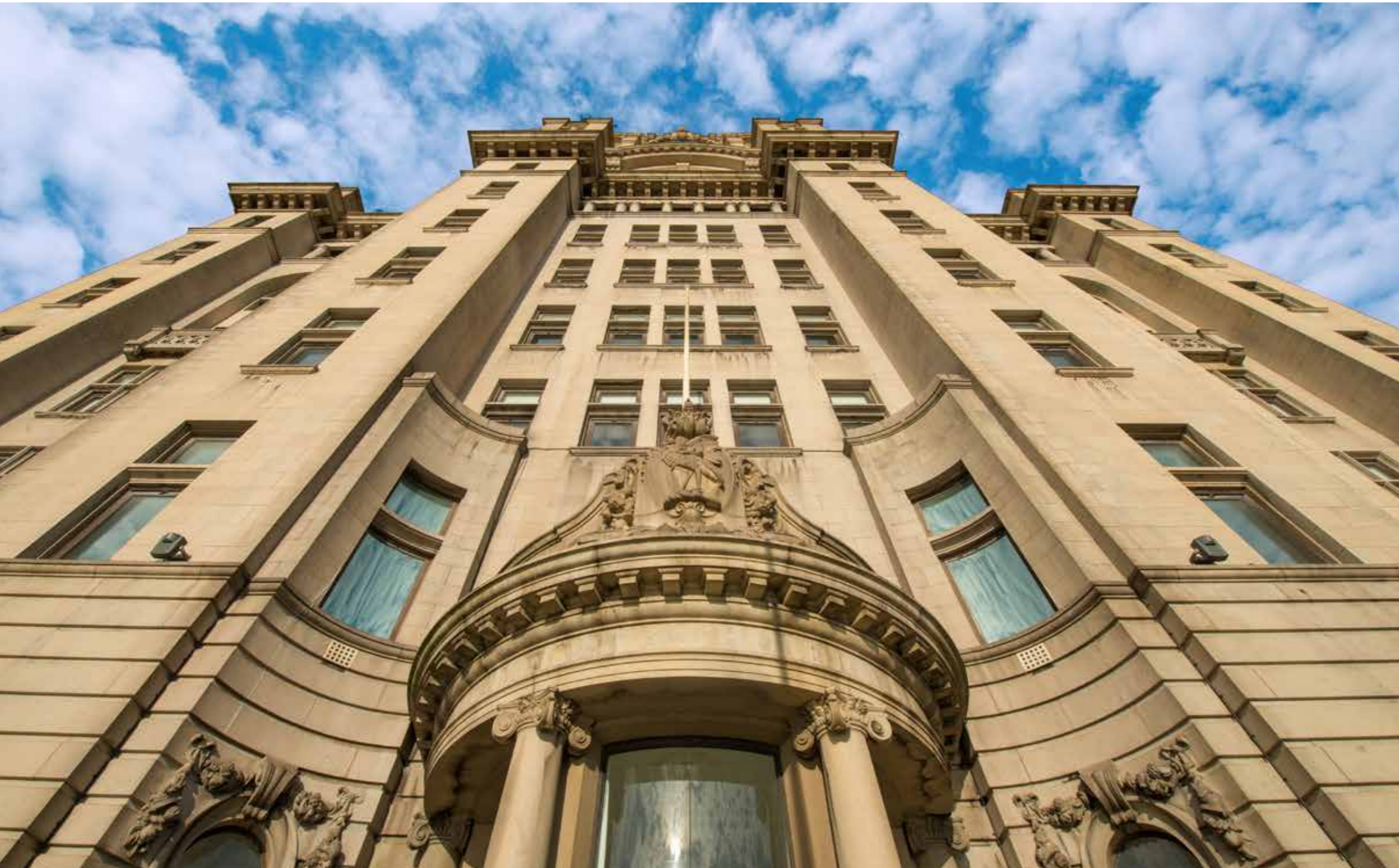


## IT'S TIME TO RELAX

Our dedicated event managers will be on hand throughout to guide you through the organisation of your wedding day.

Your event manager will arrange the production of your choice, from furniture and flowers to bands, DJs and lighting. And, unlike many other venues, that same event manager will be there on your wedding day to ensure all proceedings run to plan, so you can relax and enjoy the occasion.





## STEEPED IN HISTORY

Construction began on the Royal Liver Building in 1907, when it was designed as an office for the 6,000 employees of the Royal Liver Group. Designed by Walter Aubrey Thomas, the foundation stone for the building was laid in 1908 with the building opening its doors on 19 July 1911.

The building forms one of the 'Three Graces' along with the Port of Liverpool Building and the Cunard Building. It's considered a hugely important Liverpool icon, reflected in its Grade I listed building status.

The Royal Liver Building stands at 90 m (300 ft) tall. Crowning it is a pair of clock towers, which were designed to allow passing mariners to tell the time. Atop each tower stands the mythical Liver Birds.

Popular legend has it that while one bird looks out over the city to protect its people, the other bird looks out to sea at the new sailors coming in to port. It is also often said that if one of the birds were to fly away the city of Liverpool would cease to exist.





0151 559 1950  
hello@royalliverbuildingvenue.co.uk  
royalliverbuildingvenue.co.uk



THE VENUE  
ROYAL LIVER BUILDING

First Floor, Royal Liver Building  
Pier Head, Liverpool, Merseyside L3 1PW