

**MILLENNIUM**  
GLOUCESTER HOTEL & CONFERENCE CENTRE  
LONDON KENSINGTON



**MILLENNIUM**  
BAILEY'S HOTEL  
LONDON, KENSINGTON





*Celebrate*  
your special day

# Welcome

The Gloucester and Bailey's Hotel is the perfect venue for your special day. We are here to ensure that one of the most important days of your life is celebrated with finesse and style, and that all your ideals and aspirations are met.

We will tend to your every particular need; from providing you with expert Wedding Specialists, who will be able to look after all the details of the wedding, such as; the flower arrangements, cakes, decorations, menu etc., to ensuring that we cater for all your cultural preferences and cuisine (i.e. Kocher). Your wedding is important to you and therefore to us. In order to ensure your uttermost satisfaction, wedding packages can be tailor made to fit your special requirements, because at Millennium we care about your needs and guarantee you that your day will be one to remember.







Your  
*Hen / Stag Party*

### Dimensions

**Dimensions**  
 16.12 x 20.62m / 52'88" x 67'75"

**Max height**  
 3.75m / 12'4"

**Min height**  
 3.32m / 10'11"

**Total area**  
 312m<sup>2</sup> / 3358ft<sup>2</sup>

**Door height**  
 2.0m / 6'7"

**Door width**  
 1.57m / 5'2"

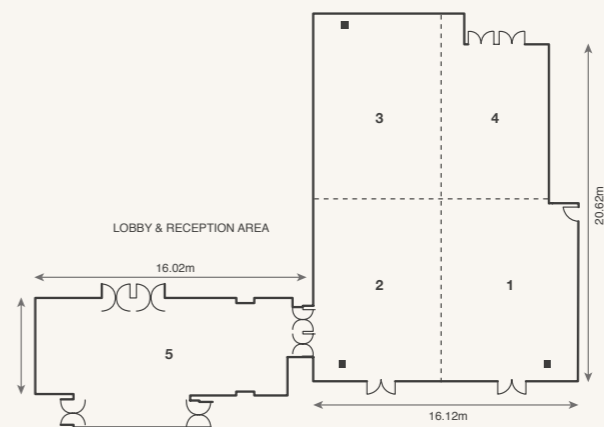
### Maximum Capacities

90 - 500 reception style

40 - 310 banquet style

60 - 250 dinner dance style

### Cromwell Suite Floorplan



## *The Cromwell Suite*

Your Hen/Stag is a celebratory event to be indulged in before the big day. We at Millennium Gloucester can arrange this event for you at the hotel, leaving you with one less job to worry about.

The Cromwell Suite is an ideal venue for your event, and with night clubs and other entertainment options in close proximity, you are sure to have an evening to remember.





*Your stay with us*

**Accommodation**

**Average Room Size**  
????????????????????????????

**Number of Rooms  
at the Gloucester**  
610 bedrooms

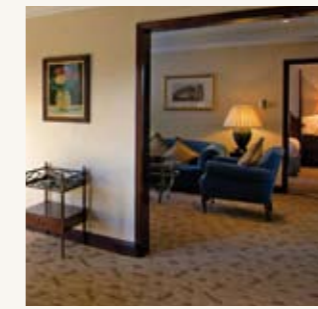
**Number of Rooms  
at the Bailey's**  
211 bedrooms

*Luxury accommodation*

The Bailey's and Gloucester Hotel is adjacent to the wedding function rooms; this allows us to provide you with accommodation options from either hotel.

You will have a luxury suite, tailored to meet your every need on the special day. The exclusive accommodation features a king size bed and contains all the essentials required to prepare you for your special day and night.

Your suite benefits from in-room registration and breakfast the following morning, either in your room or in the hotel breakfast area. In addition, you will also have access to the club lounge, where you will receive complimentary refreshments throughout the day and evening until 7.30pm.







*Your Civil Ceremony*

### Dimensions

#### Dimensions

21.66 x 21.5m / 71'06" x 70'54"

#### Max height

6 Storeys

#### Min height

3.52m / 11'7"

#### Area

287m<sup>2</sup> / 3090'51ft<sup>2</sup>

### Maximum Capacities

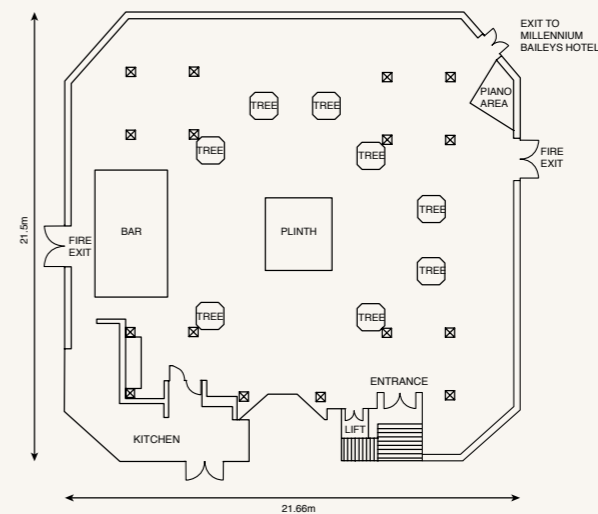
300 reception style

250 theatre style

150 banquet style

150 dinner dance style

### Conservatory Floorplan



## *Conservatory*

The glass structure of the Conservatory room creates a dramatic back drop for your perfect day, making this function room an ideal location for your wedding ceremony. Its elegance and beauty lies in the light that cascades into the room through the glass, providing you with a captivating and lasting impression. This room is further enhanced by the lit-up palm trees, which not only provide you with style but a definite chic and sophistication.





# Photography and attractions

## Distances:

### Kensington Palace & Gardens

An approximate 15 minute walk

### Earls Court & Olympia Exhibition

An approximate 15 minute walk

### Natural History Museum

An approximate 10 minute walk

### Science Museum

An approximate 10 minute walk

### Victoria & Albert Museum

An approximate 15 minute walk

### The London Eye

Approximately 20 minutes on the London Underground (5 stops)

### Royal Albert Hall

An approximate 20 minute walk

### Harrods

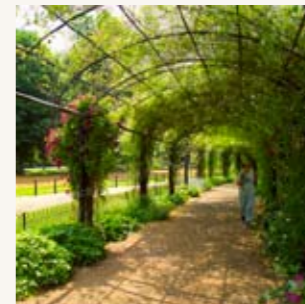
An approximate 20 minute walk

## Heart of Kensington

The Millennium Gloucester and the Bailey's Hotel is positioned in the heart of the prestigious Kensington. The location creates a great opportunity for capturing your special day on film by taking advantage of the major attractions, which are in close proximity to the hotel. These attractions include:

- Kensington Palace & Gardens
- Earls Court & Olympia Exhibition Centres
- Natural History Museum
- Science Museum
- Victoria & Albert Museum
- The London Eye
- Royal Albert Hall
- Harrods

For a fractional extra cost we can also supply the married couple with a Rolls Royce.







The  
*Wedding*  
dinner/reception

After your civil ceremony, your guests can either be taken to the Orchid or the Sentosa suite, for your wedding reception.

### Dimensions

#### Dimensions

21 X 20m / 68'10" x 65'70"

#### Max height

6.4m / 21'

#### Min height

5.4m / 17'9"

#### Total area

420m<sup>2</sup> / 4521ft<sup>2</sup>

#### Door height

2.2m / 7'3"

#### Door width

2.9m / 9'6"

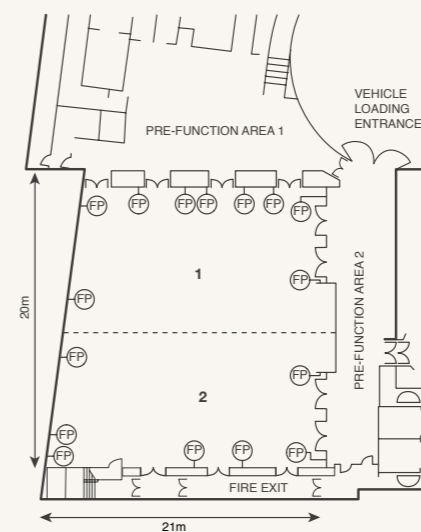
### Maximum Capacities

500 reception/theatre style

400 banquet style

400 dinner dance style

### Orchard Suite Floorplan



## Orchard Suite

The Orchard Suite encapsulates elegance; with 21 foot high ceilings and stunning light fittings, it has the ability to create the ultimate mood setting. It can hold a maximum of 500 people and is a highly engineered suite fitted for equipment. The high, weight fitted, full wired ceilings, allows for a blank canvas upon which you can create your most perfect day.

The room can be divided, with a sliding partition, to create well equipped rooms so that whilst you are having your photographs taken, your guests can indulge in pre-wedding reception drinks and snacks.







The  
*Wedding*  
dinner/reception

continued...

## Dimensions

### Dimensions

18.95 X 21.20m / 62'17" x 69'55"

### Max height

3.52m / 11'7"

### Min height

3.52m / 11'7"

### Total area

393m<sup>2</sup> / 4230ft<sup>2</sup>

### Door height

2.1m / 6'11"

### Door width

2.0m / 6'7"

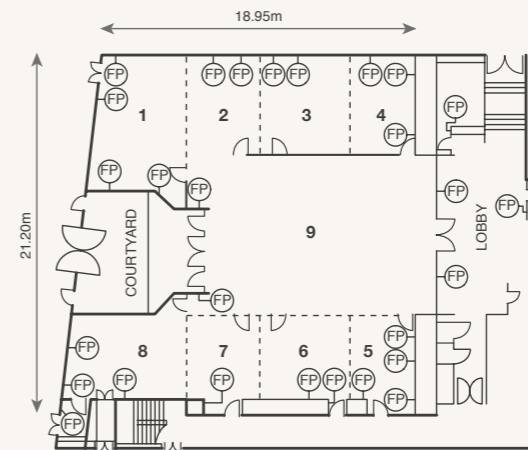
## Maximum Capacities

300 reception/theatre style

300 banquet style

250 dinner dance style

## Sentosa Suite Floorplan



## Sentosa Suite

The Sentosa Suite is ideal for wedding receptions as the room possesses the ability to divide in a number of ways, catering for pre-function areas or champagne receptions.

The Sentosa room has sunken in ceilings, with great lighting, to create a desirable atmosphere for your special day, and with the flexibility of choice and design of the room, you are guaranteed to have the perfect wedding reception dinner.

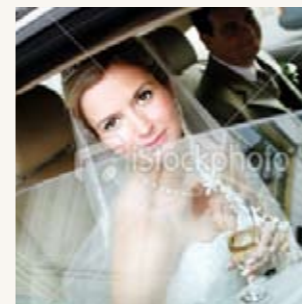


# Wedding Planner

At the Millennium Gloucester hotel, we will provide you with a wedding Specialist who will handle all your concerns, and ensure that your special day is perfect in every way. We have provided you with a wedding checklist below, to ease you into the planning process and to take note of items you may have forgotten about.

## Your basic Wedding Checklist...

<b>Apparel</b>	The wedding gown, bridesmaids outfits, groomsmen outfits and accessories	<input type="checkbox"/>
<b>Flower arrangements</b>	Bouquet, centre pieces, flower girls, alter pieces and other flower decorations	<input type="checkbox"/>
<b>Stationary</b>	Invitations, reply cards, ceremony cards, name cards for the table seating's and wedding programmes	<input type="checkbox"/>
<b>Reception</b>	The wedding cake, liquor, catering, table decorations, linen, guest book, entertainment, gratuities and other displays and decorations as well as music	<input type="checkbox"/>
<b>Miscellaneous</b>	Marriage license, hairdresser, make-up, wedding planner, hotel for guests, manicure and pedicure	<input type="checkbox"/>
<b>Ceremony</b>	Location, pew/chair rental, pew/chair decorations, guest book, ring bearer pillow, users, aisle runners, unity candle and alter decorations	<input type="checkbox"/>
<b>Rehearsal dinner</b>	Bartender, liquor, caterer, tables/chairs, decorations, music, sound system, guest parking, centrepieces, linens and food	<input type="checkbox"/>
<b>Photography</b>	Bridal portraits, reception, ceremony, photo albums, engagement portraits	<input type="checkbox"/>
<b>Rings</b>	Wedding bands	<input type="checkbox"/>
<b>Honeymoon</b>	Air fare, accommodation etc	<input type="checkbox"/>



# Enquiry Form

## Please complete and return to...

Millennium Gloucester Hotel & Conference Centre, 4-18 Harrington Gardens, London SW7 4LH  
Alternatively, contact us on: T: +44 (0) 20 7331 6257 on E: [mcc.events@millenniumhotels.co.uk](mailto:mcc.events@millenniumhotels.co.uk)

<b>Name:</b>	<input type="text"/>
<b>Surname:</b>	<input type="text"/>
<b>Mobile Number:</b>	<input type="text"/>
<b>Email Address:</b>	<input type="text"/>
<b>Date of Wedding:</b>	<input type="text"/>
<b>Do you want your wedding ceremony and/or dinner at the hotel? Please specify</b>	<input type="text"/>
<b>Is your wedding a morning/midday/afternoon/evening function? Please specify</b>	<input type="text"/>
<b>Specific Requests</b>	<input type="text"/>



*Your dining experience*



**OLIVES**  
Restaurant and Bar

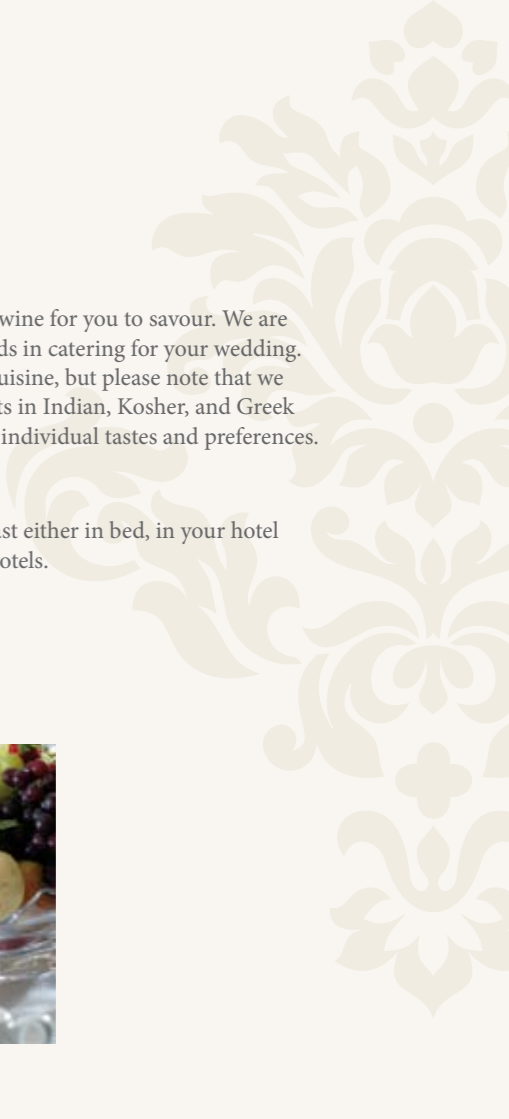


## *Exquisite catering*

A wedding would not be complete without the finest of food and wine for you to savour. We are therefore very proud to admit that we offer the highest of standards in catering for your wedding. Our resident chefs specialise in modern European and Oriental cuisine, but please note that we work closely with a number of catering companies who are experts in Indian, Kosher, and Greek cuisines, ensuring that a variety of menus can be created for your individual tastes and preferences.

### **Breakfast as a married couple**

The morning after your wedding day, will be greeted with Breakfast either in bed, in your hotel room, or in the hotels breakfast rooms on the main levels of the hotels.





## Capacities

	reception style	theatre style	banquet style	dinner dance style
<b>Cromwell Suite</b>	90 - 500	N/A	40 - 310	60 - 250
<b>Conservatory</b>	300	250	150	150
<b>Orhard Suite</b>	500	500	400	400
<b>Sentosa Suite</b>	300	300	300	250

Millennium Bailey's Hotel  
140 Gloucester Road, London SW7 4QH  
Telephone: +44 (0) 20 7373 6000  
Fax: +44 (0) 20 7331 6340

Millennium Gloucester Hotel & Conference Centre  
4-18 Harrington Gardens, London SW7 4LH  
Telephone: +44 (0) 20 7331 6257  
Fax: +44 (0) 20 7331 6466

Email: [mcc.events@millenniumhotels.co.uk](mailto:mcc.events@millenniumhotels.co.uk)  
[www.millenniumhotels.co.uk](http://www.millenniumhotels.co.uk)



## Directions: Trains and the Underground

**From Gatwick Airport** take the Gatwick Express Train to London Victoria (approx. 30 minutes). From London Victoria take the underground Circle or District line to Gloucester Road tube station.

**From Heathrow Airport** take the Heathrow Express to Paddington station (approx. 30 minutes). The hotel is a short distance from either the underground via the District or Circle line, or by taxi (approx. 15-20 minutes).

**From London Luton Airport** take a first Capital connect train to Kings Cross Thameslink and then change onto the Piccadilly line on the underground (approx. 25 minutes)

**From London Stansted** take 'one' train to London Liverpool, and then change onto the Circle line on the London Underground (approx. 35 minutes).

The Millennium Gloucester and Bailey's Hotel is less than a minute walk from the Gloucester Road tube station, which connects you to 3 major lines; Piccadilly, Circle and District providing a great transport links to the rest of London.

## Directions: Car (Parking is available)

From London Heathrow take the M4/A4 (40-60 minutes).