



Whitbourne Hall from the Terrace



Bride on the marble stairs



Choice of caterer, menu and location of dining area is entirely yours

Cold buffet in the Drawing Room



The Drawing Room



Dining Room table set for 20

Plan your Dream Wedding and bring it to life at **Whitbourne Hall** A very special place

- ∞ Treat Whitbourne Hall as your own home for your Wedding Day
- ∞ Bring in your own Caterer and Wine; we will not charge corkage
- ∞ Dress the rooms to your own theme

Our Wedding Reception Hire includes:

Exclusive use of Entrance Hall, Main Hall, Dining Room, Drawing Room, Morning Room and Terrace

Use of Service kitchen, cloakrooms, car park; Tables and chairs to seat 130 in formal layout;

We will give you free access the day before and after to set up and clear away

Maximum number of guests 250

Whitbourne Hall is a Grade II* Listed country house built c. 1860 for a Victorian manufacturer. Elegant and formal in classical style, the house is also welcoming and we want you and your guests to feel at home.

The Main Hall with white marble staircase and painted glass ceiling is a pillared atrium affording an airy space for guests to mingle in any weather.

The Drawing Room and Dining room can both be used either for dining, or dancing.

A comfortable sitting room is also available for relaxing away from the music.

In summer the Terrace is yours to enjoy. With views over the Italian Garden to beautiful rolling Herefordshire hills, this is the perfect spot for welcoming drinks, or more energetic activities if you choose.

For more details, or to arrange a visit, please contact

**Weddings, Whitbourne Hall,
Whitbourne, Worcester WR6 5SE**

Telephone 01886 821165 www.whitbournehall.com



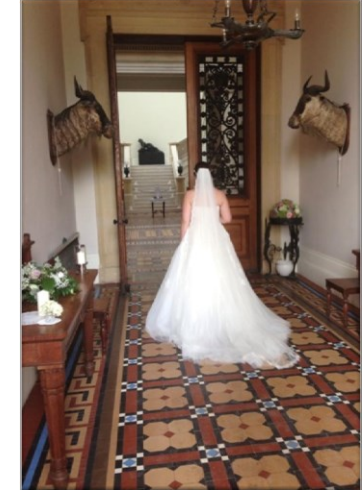
Secrets on the Italian Garden steps



Bridal Carriage under the Portico



Looking SE from the Terrace



At the doors to the Atrium



Games on the Terrace