

BURY COURT ESTATE

THE ESTATE

Bury Court Estate is a charming, elegant and chic venue in secluded countryside on the Surrey/Hampshire borders. Our beautifully restored barn, Oast Cottage and exceptional gardens provide an idyllic setting for weddings.

Arranging an your wedding at the estate provides you with privacy and the enjoyment of knowing the day will be yours without any interruptions.

Located approximately 1 mile from the village of Bentley Bury Court Estate has excellent transport links by road with London, Guildford, Winchester and Southampton and by rail with London, Guildford and Alton.

Bury Court Barn is an impressive space, with full height windows and a vaulted beamed ceiling. The barn is light airy and spacious. The barn retains much of its authenticity, with mellow oak beams and exposed brickwork.

Oast Cottage, a charming converted one bedroom apartment in the Oast House, is available for overnight accommodation before or after weddings. There is direct access from Oast cottage to the barn. The calm and comfortable space is an excellent space for the bridal party to prepare for their day and relax after their function.

The gardens at Bury Court estate are steeped in history. The front garden was designed by minimalist Christopher Bradley-Hole using tall grasses to embrace a central pool, whilst the courtyard garden was created in conjunction with the previous owner John Coke in collaboration with Piet Oudolf a famous Dutch garden designer.



BURY COURT ESTATE

LOCATION

The village of Bentley is approximately one mile away and benefits from excellent transport links from the A31 and the A3 direct to London and beyond.

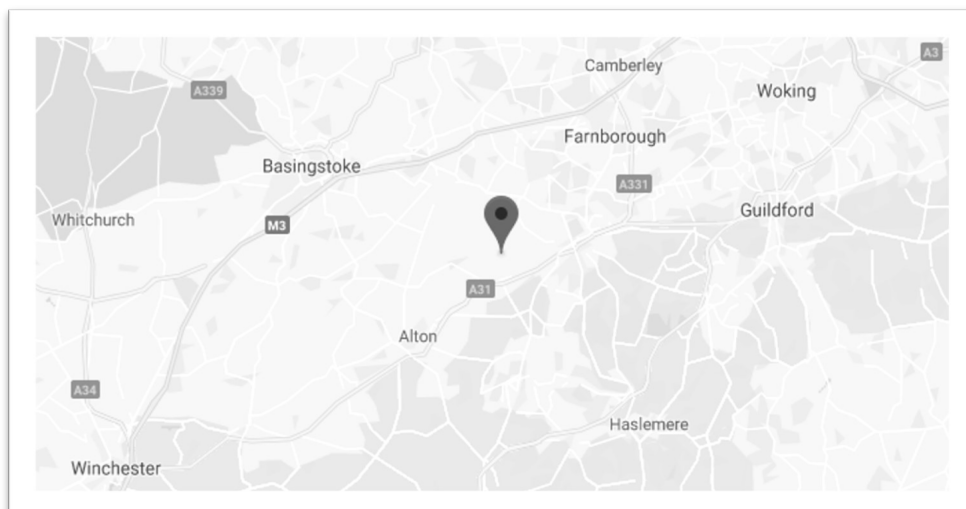
Bentley has a train station, as does nearby Farnham with trains to London Waterloo taking just under an hour. Bentley Train station is 7 minutes by car from Bury Court Estate.

Heathrow, Gatwick and Southampton Airports and Waterloo Station all provide immediate access within an hour.

Bury Court Estate is situated off the A31 which is a short drive from the M3 and approximately 20 minutes from the M25 and M4.

Local taxi companies are available on request.

Designated parking is available within the grounds of the estate. Guests are welcome to leave their cars overnight at their own risk but cars must be collected by 9.30am the following morning.



Bury Court Estate • Bentley • Farnham • Surrey • GU10 5LY
T • 07969 017022 E • rachel@berryproperties.co.uk

BURY COURT ESTATE

BURY COURT BARN VENUE INFORMATION

Bury Court Barn is licensed to hold civil ceremonies. The ceremonies area beneath the gallery provides the perfect setting for civil ceremonies or blessings. The area can be divided from the main barn by elegant floor to ceiling curtains. The ceremonies area can comfortably seat up to 180 people. Alternatively ceremonies may be held in the grounds at our rustic wedding gazebo.

The main hall of the barn, with its beautiful beams, provides a wonderful warm setting for your wedding breakfast. Each of our round tables seat 8-10 people and we have long tables for a traditional head table and for buffet tables. The main hall can comfortably accommodate up to 180 people for a sit down meal and up to 200 for a buffet.

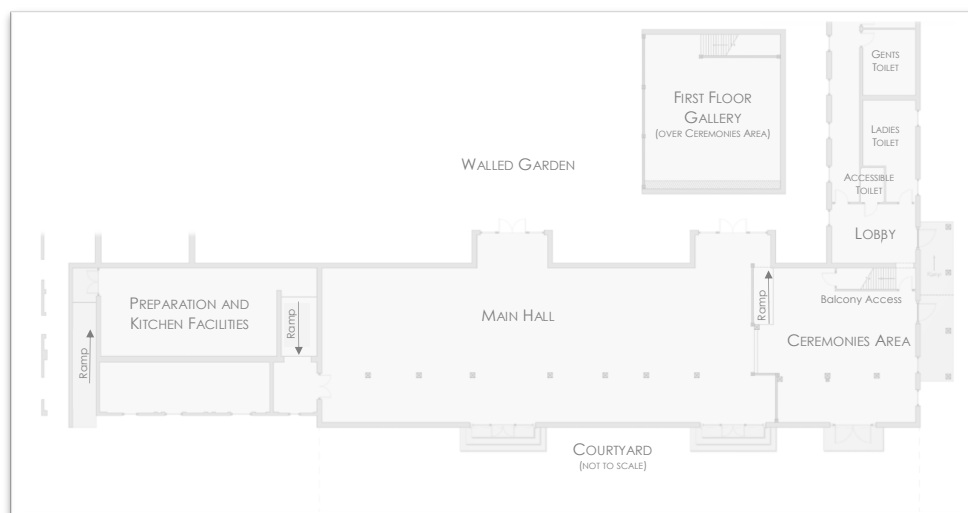
Our freestanding bar can be set up in a number of locations to suit your reception layout.

In the evening the ceremonies area provides the ideal dance floor, with room for a DJ or band. The area can be discreetly setup during the wedding breakfast, causing no disturbance to your celebrations.

The first floor gallery, above the ceremonies area, is a great setting for entertainment for your guests, such as a photo booth or a casino.

Bury Court Barn is fully accessible, with ramps for wheelchair users and accessible toilet facilities. The courtyard is accessible via a side entrance.

The barn is fully heated in winter providing warm and welcoming setting and in summer is light filled and airy.



BURY COURT ESTATE

BURY COURT BARN VENUE INFORMATION CONTINUED

Children are welcome at Bury Court Estate. We can make recommendations for a childcare service should you wish to organize this for your younger guests.

Water features are one of the attractions of Bury Court Estate. Please be aware that the water is unfenced and is a potential risk, especially, but not solely, to children.

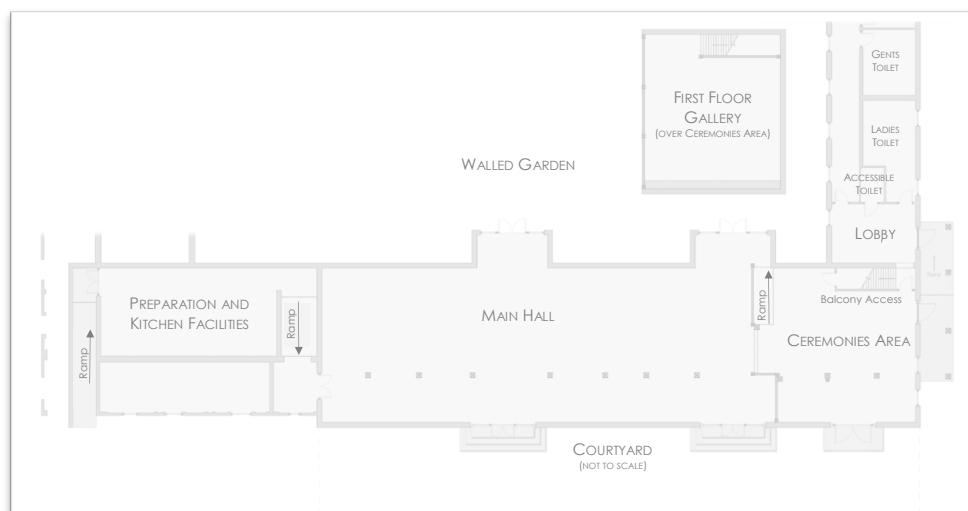
There are baby changing facilities at Bury Court Estate and highchairs available for your use.

Confetti may be thrown only in the courtyard. We allow the use of only fresh or dried petals as confetti.

The use of candles and tealights is allowed inside the barn, however for safety and insurance purposes flames must be covered by storm glass. There are no restrictions on the use of battery operated fake flame candles.

Unfortunately fireworks, the release of Chinese lanterns or helium balloons is prohibited.

Smoking/vaping is not allowed anywhere inside the buildings; however, your guests can smoke/vape in the Courtyard area.



BURY COURT ESTATE

CEREMONIES

Ceremonies and blessings can be held in Bury Court Barn or in the grounds of Bury Court Estate at our rustic wedding gazebo (weather permitting). Ceremonies may be arranged to take place from 2pm onwards.

Bury Court Estate is licensed to hold civil ceremonies. Civil ceremonies should be booked with Winchester Register Office.

W: ceremonies.midhants@gov.co.uk

T: 01962 861855

The ceremony area in Bury Court Barn can comfortably seat up to 150 people. The area also has plenty of space for musicians to accompany the ceremony. Alternatively our sound system maybe used to play music of your choice.

Our rustic wedding gazebo in the grounds of Bury Court Estate can comfortably seat 150 people. The gazebo itself accommodates 10 people.

If you would prefer to hold your ceremony in Bury Court Barn in case of inclement weather a decision must be made before 9am on the morning of your wedding, in order that we may setup in the correct location. A full refund of the gazebo fee will be made if we receive your instruction to move the ceremony to Bury Court Barn before 9am.

The gazebo and the formal gardens are available for photographs for 45 minutes after your ceremony for photography.

It may be possible for your pet to attend your ceremony subject to The Bury Court Estate pet guidelines.

Alternatively ceremonies may be held at St Mary's Church, Bentley. The church can be accessed directly via our private tree lined route.



BURY COURT ESTATE

CATERING

Catering at Bury Court Estate is provided exclusively by Jacaranda Catering. With twenty years experience of event catering Jacaranda have built their reputation for excellent attention to detail, mouthwatering menus, stylish and elegant catering, and outstanding service.

The team at Jacaranda Catering will organize every aspect of your catering, from tableware and linen, to cake stands, and even The Coco Van, a French vintage van serving food or coffees.

Please contact Jacaranda Catering to discuss menu options and pricing.

Jacaranda Catering Limited
Riverground Stables, Cowdray Park, Midhurst, West Sussex GU29 9AL
T: 01730 810900
W: jacarandacatering.com



BURY COURT ESTATE

BAR & DRINKS

We can provide welcome drinks and have a comprehensive wine list, complemented by our well stocked bar. We can tailor a drinks package to suit your requirements.

Our freestanding bar can be set up in a number of locations to suit your reception layout. The fully licensed bar has last orders at 11:15 pm and closes at 11:30 pm.

We are able to organize a cash or prepaid bar to suit your requirements.



BURY COURT ESTATE

MUSIC AND ENTERTAINMENT

Bury Court Barn has its own sound system and microphone available for your use. This system can be used for background music and for amplified speech.

Amplified and acoustic music is permitted inside Bury Court Barn between 10am and 11.30pm

Acoustic music is permitted in the courtyard of Bury Court Barn between 10am and 6pm

All bands and DJs will need to show proof of PAT-tested equipment along with public liability insurance and, if applicable, employers liability insurance prior to your wedding date.

We are able to recommend bands, DJs and entertainers.



BURY COURT ESTATE

ACCOMODATION

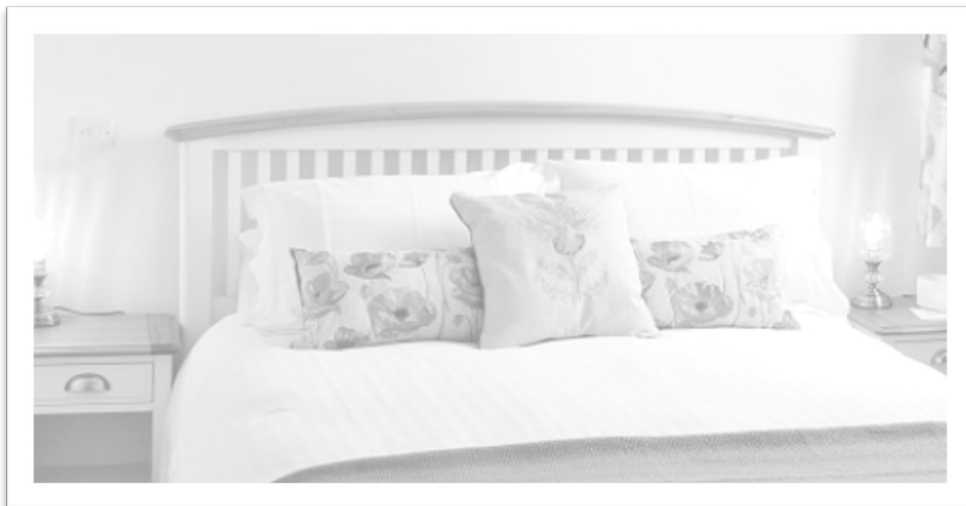
Oast Cottage, a charming converted one bedroom apartment in the Oast House, is available for overnight accommodation before or after wedding. The calm and comfortable space is an excellent space for the wedding party or event organizers to prepare for their day and relax after their function. Oast Cottage is available from midday on the day of your wedding and check out is at 10am the following morning.

There are many hotels, inns, guest houses and rental properties within the locality. We have listed a few of our favourites below:

The Anchor Inn, Lower Froyle, Alton, Hampshire GU34 4NA
W: anchorinnatlowerfroyle.co.uk
T: 01420 23261
1.6 miles from Bentley

The White Hart, 139 London Road, Holybourne, Alton, Hampshire GU34 4EY
W: whitehartholybourne.com
T: 01420 87654
3.7 miles from Bentley

Mercure Farnham Bush Hotel, The Borough, Farnham, Surrey GU9 7NN
W: mercure.accor.com
T: 01252 234800
3.9 miles from Bentley



BURY COURT ESTATE

VENUE HIRE

| JANUARY | 2020 | 2021 | FEBRUARY | 2020 | 2021 | MARCH | 2020 | 2021 |
|--------------------|-------------|-------------|--------------------|-------------|-------------|--------------------|-------------|-------------|
| Monday to Thursday | 3,250 | 3,750 | Monday to Thursday | 3,250 | 3,750 | Monday to Thursday | 3,250 | 3,750 |
| Friday | 3,750 | 4,250 | Friday | 4,000 | 4,500 | Friday | 4,000 | 4,500 |
| Saturday | 5,500 | 6,000 | Saturday | 5,600 | 6,100 | Saturday | 5,000 | 5,500 |
| Sunday | 4,000 | 4,500 | Sunday | 4,000 | 4,500 | Sunday | 4,000 | 4,500 |
| APRIL | 2020 | 2021 | MAY | 2020 | 2021 | JUNE | 2020 | 2021 |
| Monday to Thursday | 3,500 | 4,000 | Monday to Thursday | 4,400 | 4,900 | Monday to Thursday | 4,400 | 4,900 |
| Friday | 5,300 | 5,800 | Friday | 6,350 | 6,850 | Friday | 6,350 | 6,850 |
| Saturday | 6,200 | 6,700 | Saturday | 6,750 | 7,450 | Saturday | 6,750 | 7,750 |
| Sunday | 4,500 | 5,000 | Sunday | 5,800 | 5,900 | Sunday | 5,800 | 5,900 |
| JULY | 2020 | 2021 | AUGUST | 2020 | 2021 | SEPTEMBER | 2020 | 2021 |
| Monday to Thursday | 4,700 | 5,200 | Monday to Thursday | 4,700 | 5,200 | Monday to Thursday | 4,450 | 4,950 |
| Friday | 6,350 | 6,850 | Friday | 6,350 | 6,850 | Friday | 6,350 | 6,850 |
| Saturday | 6,750 | 7,750 | Saturday | 6,750 | 7,750 | Saturday | 6,750 | 7,450 |
| Sunday | 5,800 | 6,000 | Sunday | 5,800 | 6,000 | Sunday | 5,800 | 5,900 |
| OCTOBER | 2020 | 2021 | NOVEMBER | 2020 | 2021 | DECEMBER | 2020 | 2021 |
| Monday to Thursday | 3,900 | 4,400 | Monday to Thursday | 3,250 | 3,750 | Monday to Thursday | 3,750 | 4,250 |
| Friday | 5,800 | 6,300 | Friday | 4,000 | 4,500 | Friday | 4,450 | 4,950 |
| Saturday | 6,400 | 6,900 | Saturday | 5,600 | 6,100 | Saturday | 6,200 | 6,700 |
| Sunday | 4,000 | 4,500 | Sunday | 3,750 | 4,250 | Sunday | 4,000 | 4,500 |

The above prices are for exclusive use of Bury Court Barn, including the use of our tables, chairs, sound system and microphone.

If you would like to hold your ceremony or blessing in our rustic wedding gazebo an additional charge of £150 will apply to cover setup of this area.

Bury Court Barn Estate is available from 10 am on the day of your wedding for decoration. Earlier access maybe possible and subject to an additional fee.

Bury Court Barn must be vacated by midnight on the day of your wedding.

Oast Cottage is available for overnight stays at the rate of £55 per night.

Bank holiday weekend rates can vary, please get in touch to find out more.
On Bank holiday Sundays, Saturday rates apply.
All rates are inclusive of VAT.

Bury Court Estate • Bentley • Farnham • Surrey • GU10 5LY
T • 07969 017022 E • rachel@berryproperties.co.uk