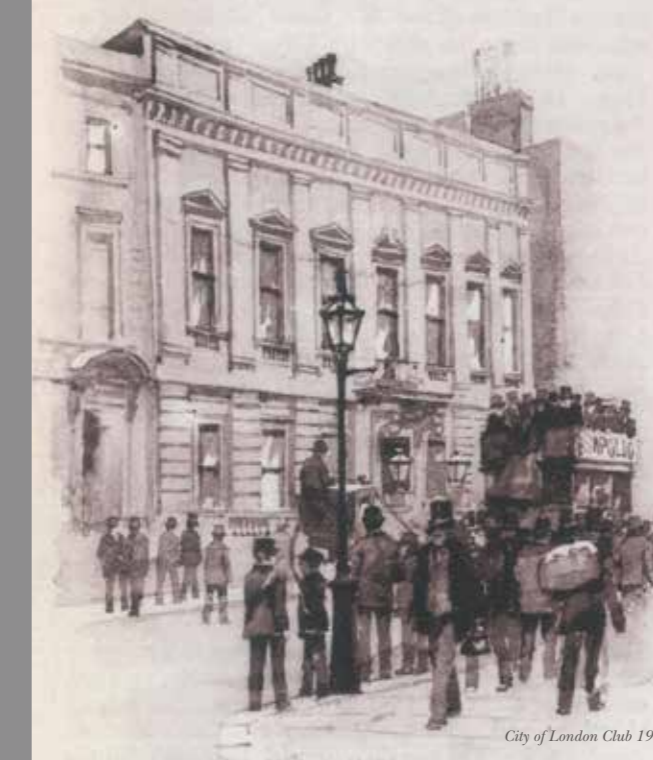




CITY *of* LONDON CLUB

Historic elegance in the heart of the City



Amidst the towering steel spires in the heart of the City nestles its oldest club, the City of London Club.

According to its first members, the Club offered 'a Place of Useful Resort' to those of 'known respectability' in the City. Since 1832, important City figures such as the first Duke of Wellington, Sir Robert Peel and the original Rothschild family have used the Club to relax in good company and comfortable, elegant surroundings.

Our impressive heritage is matched by our impressive range of facilities. We provide everything you'd expect for modern events, conferences and meetings in the most elegant setting you'll find in the City, and you don't have to be a member to book.

To find out how we could help you create a truly memorable event simply call 020 7588 8558 or email events@cityoflondonclub.com

EVENTS AND BUSINESS MEETINGS

Set the tone for a productive meeting in the grand, yet convivial, surroundings of the City of London Club. Our range of purpose-designed, flexible meeting spaces can accommodate any event from small meetings and business lunches to conferences and AGMs.

The City of London Club is also an ideal venue for daytime events and evening socials. The Club embodies the elegance of old London with its double-winged, sweeping staircase and the lofty rooms with sumptuous décor, which provide a dramatic backdrop for exciting and memorable events.





THE CITY SUITE



The City Suite is a versatile space which can operate as one large room, or be subdivided into two or three rooms (each can be booked separately), making it ideal for break-out areas, smaller meetings and private dining.

The rooms accommodate any combination of between 14 and 80 people.

Dimensions L 17.7m : W 5.79m : H 2.7m (102.48sqm)

WELLINGTON ROOM AND MASTERMAN ROOM

Need a small, discreet meeting space outside the office? The Wellington Room and Masterman Room are ideal for when you don't want the world to know your business. The rooms each accommodate up to 18 people.

Dimensions of each room L 4.88m : W 5.79m : H 2.7m (28.26sqm)





MAIN DINING ROOM

This magnificent space has echoed with the rumbling laughter of generations of satisfied diners. The Club's kitchen focuses on the best of British produce from specially selected farming estates, tailoring menus to showcase the high quality, seasonal ingredients. The Main Dining Room accommodates 120 guests for dinner or drinks receptions for up to 300 guests.

Dimensions L 18.3m : W 9.15m : H 9.15m (167.45sqm)

(Available from 5pm)





GARDEN ROOM AND TERRACE

This elegant, high-ceilinged room accommodates up to 100 guests and has a large, pull-down projection screen perfect for presentations.

Ask to see our newly refurbished roof terrace.

Book a meeting or conference in the Garden Room and you have use of its spacious, private roof terrace, a contemporary space overlooked by the dramatic City skyline. We guarantee to get your guests some fresh air whatever the British seasons throw at us. If our new, heated umbrellas aren't enough, we'll provide pashminas and blankets along with plenty of hot drinks and snacks to encourage that Bulldog spirit.

The Garden Room and Terrace is also the perfect indoor-outdoor space for spring parties, summer BBQs and autumn events.

Garden Room Dimensions L 12.2m : W 7.75m : H 3.5m (94.55sqm)





DRAWING ROOM

The historic Drawing Room is presided over by a portrait of one of the Club's famous members, the Duke of Wellington, and contributes to the room's stately gravitas. However, appearances can be deceptive! The Drawing Room has a well-deserved reputation as a brilliant venue for a lively cocktail party. The Duke himself, while not much of a gourmet, was known for his love of a fine wine, so we think he would approve.

The Drawing Room can accommodate up to 250 guests.

Dimensions L 25m : W 7.35m : H 5.2m (183.75sqm)

(Available from 5pm)





SALISBURY ROOM

The Salisbury Room was named after one of the Club's original members, the second Marquis of Salisbury. He had eleven children from two wives so it's hardly surprising he relished a room of his own. His son, Lord Salisbury, was three times Prime Minister and originated the policy of 'splendid isolation' with regard to Europe. These days when you book the stunning Salisbury Room for its unique, intimate atmosphere, we imagine you're not seeking solitude.

The Salisbury Room accommodates up to 40 for a sociable lunch or dinner.

Dimensions L 8.62m : W 7.92m : H 4.6m (82.4sqm)





MEMBERS' BAR

This grand, panelled, club-style room has seen many intriguing plots hatched around its open fire. With prominent political members such as Sir Robert Peel as frequent visitors, the phrase 'if only walls could talk' could have been coined for this room. The Members' Bar is a cosy and intimate venue for pre-dinner drinks for up to 75 guests.

Dimensions L 12.2m : W 7.92m : H 4.6m (96.62sqm)

(Available from 5pm)





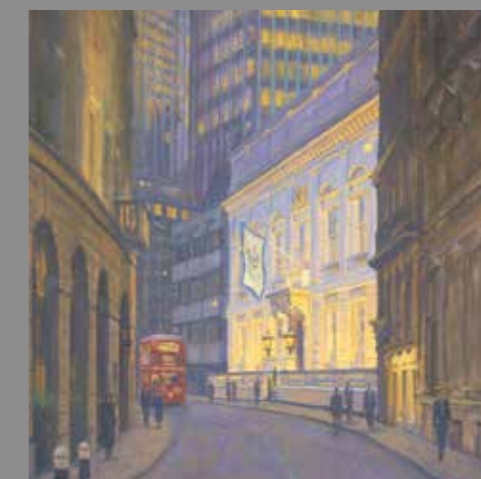
TALK TO US

From an impressive formal reception and banquet for 120 people to a private room for an hour's music lesson at lunchtime, the City of London Club has the perfect space for your requirements.

Come and visit us and you'll see that the surroundings are grand but not intimidating, opulent without ostentation and there's a calm yet convivial atmosphere in which to meet for business or entertain guests.

From your first greeting at the door, you'll feel a warm welcome extending through all the attentive, yet dignified staff. All your needs will be smoothly catered for and you can be assured the food and drink is of a quality to rival the best contemporary restaurants – but without the pretensions and the price tag.

Contact us today to find out how we can help you create a truly memorable event,
call 020 7588 8558 or email events@cityoflondonclub.com





CITY *of* LONDON CLUB

19 Old Broad Street London EC2N 1DS

T 020 7588 8558 F 020 7374 2020

events@cityoflondonclub.com

www.cityoflondonclub.com