



# CHARLTON HALL

---

THE REBELLIOUS VENUE

---



# WELCOME TO CHARLTON HALL

WELCOME TO THE HOUSE  
WHERE WE PLAY WITH THE RULES...  
EXPECT THE UNEXPECTED

Charlton Hall is our new speakeasy wedding and events venue in Northumberland, set within a stunning, Grade II listed rural country house where tradition playfully meets eccentricity. Here we bring you a magical and spectacular place to celebrate and entertain. As the naughty older sibling to our award-winning sister venue Doxford Barns, we look forward to welcoming you with open arms.

A venue like no other, this devilish country pad could be exclusively yours for private hire and weddings from 2018.

Vast high ceilinged rooms, baroque fireplaces and sash windows are what you can expect to see in this beautiful Georgian hall overlooking 150 acres of rolling countryside along the Northumbrian coast. We hope you will be wowed by our bold colour scheme, imposing Tom Dixon pendants, mismatching fabrics, tapestries, thought-provoking art and statement pieces found throughout the hall.

The rebellion begins in 2018...



LOOK  
OUT FOR  
TONGUE-  
IN-CHEEK  
TOUCHES  
THAT ARE  
SURE TO  
CAUSE A  
STIR...



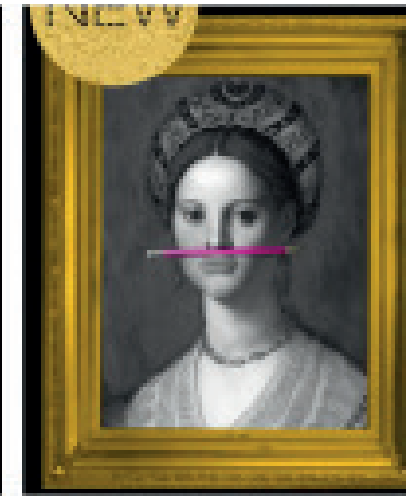
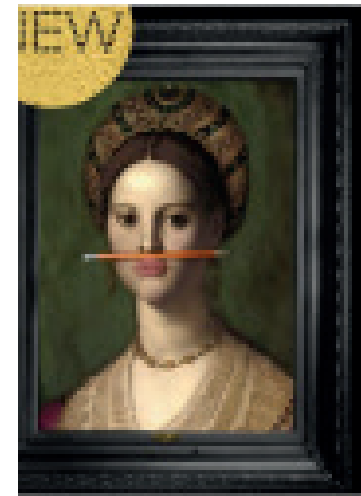
# THE HALL

Charlton Hall is the place where theatrical fantasies meet fairytale wonderlands. Where colours collide and imaginations are captured. Where old enchanting confections meet cheeky new additions and where bold and non-conformist interiors playfully champion the norm.

We mix Charlton Hall's heritage with quirky and contemporary touches to create grand entertaining spaces which will delight and dazzle your senses. Charlton Hall is like nothing you've seen before. A symphony of excellent design, bold and daring colours infused with decadent history.

Expect cheeky personalities and rooms bursting with character as we unfold our renovations at Charlton Hall. Our eccentric approach to interior design will create nothing less than a wonderland of glamour adorned with statement pieces, rich fabrics and hand painted interiors with antiques and bespoke graffiti.

Our show-stopping function rooms, fabulous entertaining areas and incredible bedrooms are named after the next generation of fearless characters linked to Charlton Hall.





# A MASTERCLASS IN INTERIOR DESIGN

BY JO AYSLEY

By now, you may have picked up on our cheeky monkey personality. It's never fun to take life seriously ALL the time, so with Charlton Hall, our vision is to create a retreat that brings out your naughty side.

Courtesy of our lead designer, Jo Aynsley of Jeffreys Interiors, Edinburgh, Charlton Hall's decor is provocative with decadent interiors and flamboyant colour schemes. We've offset these using mismatching furnishings, fabrics and intriguing accessories, including antique pieces and playful artefacts.

Large lighting installations jovially highlight the hall's Georgian features, whilst yesteryear art offers anatomical insights into the character of Charlton Hall.

Designer interiors featured at Charlton Hall include:

Matthew Williamson  
Mulberry  
Tom Dixon  
House of Hackney  
Emma J Shipley  
Andrew Martin  
Diane Von Furstenburg  
Gung-Ho  
Pierre Frey  
Vanessa Foley



ALWAYS  
SOMETHING  
THAT  
LITTLE BIT  
OFF THE  
WALL...



# THE ENTRANCE HALL

MAKING A STATEMENT!

As you step inside Charlton Hall, we want you to be blown away by its stunning Georgian architecture.

We've worked tirelessly day and night to find the best ways to highlight the rich and ornate features and this starts with the entrance hall. As you walk in, you'll be greeted by an understated ivory and white colour scheme, where gilt details bring the hall back to life and stunning silver light installations reflect the fun and good times to be had here.

Adorning the staircase and sweeping the grand hallway, we have fallen for a voluptuous, luxurious and sweet peony pink carpet. After all, you know what they say... peony is much-loved and its bloom doesn't hang around for long, so with this in mind, (and with the grandfather clock ticking away) we encourage you to make the most of your time here and live in the moment.





# THE DINING ROOM

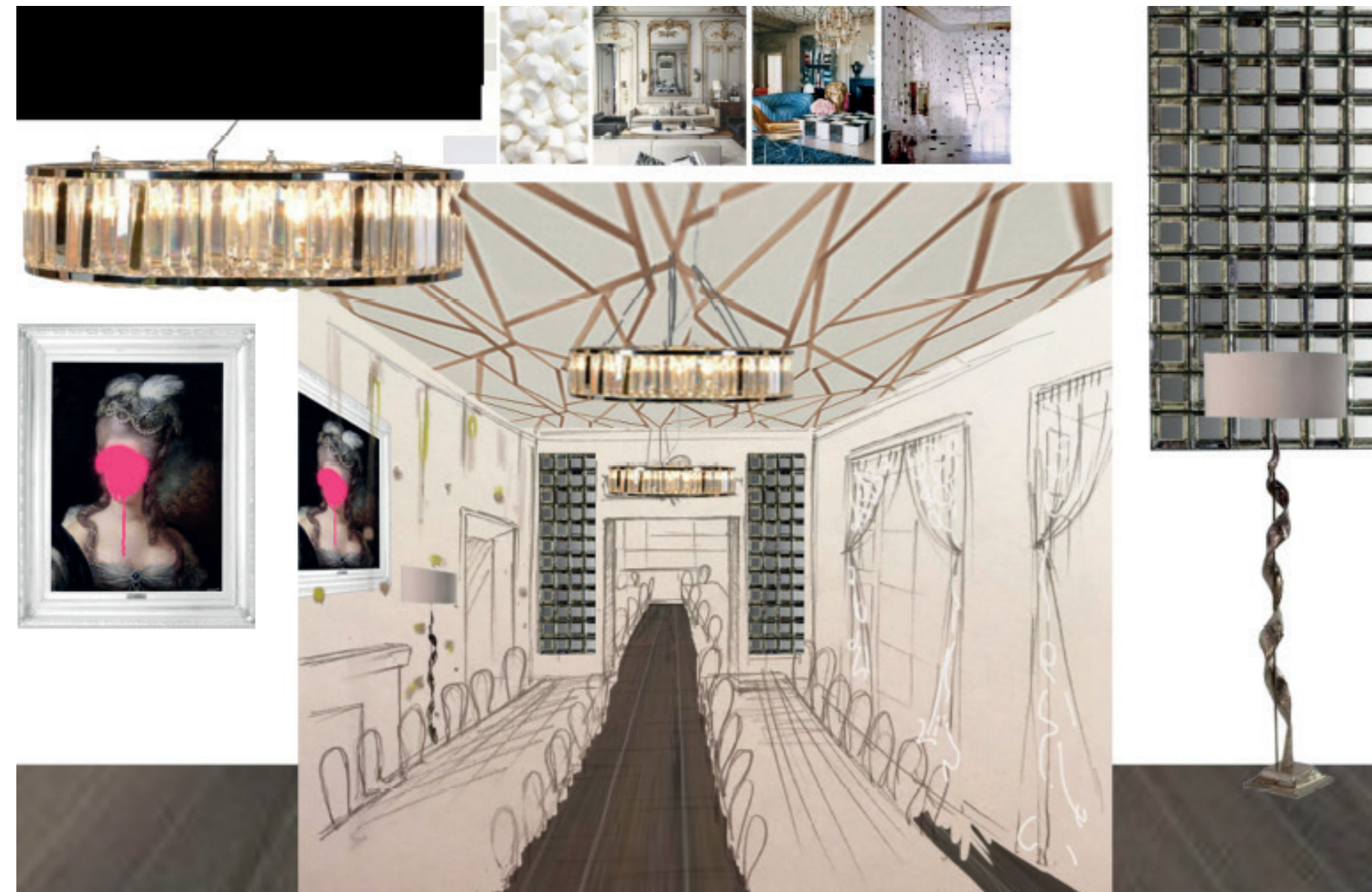
INSPIRED BY TIM WALKER

When you find out that Tim Walker, the British fashion photographer who has filled the pages of Vogue for many years, is the inspiration behind our dining room, you just know we're going to create something pretty spectacular.

Shadows and detail are the name of the game as we dress the dining room in pretty Harlequin Sumi wallpaper. Its angular geometric design works incredibly well in here, as it playfully cascades down from the ceiling to the base of our original hand-painted floors.

As if this isn't opulent enough, Andrew Martin's sheers make an ethereal appearance in the dining room, where they elegantly drape each of the vast Georgian windows. These drapes help drench the dining room with natural sunlight and reflect off the opposing wall of mirrors.

A truly sumptuous space to indulge in our culinary delights.



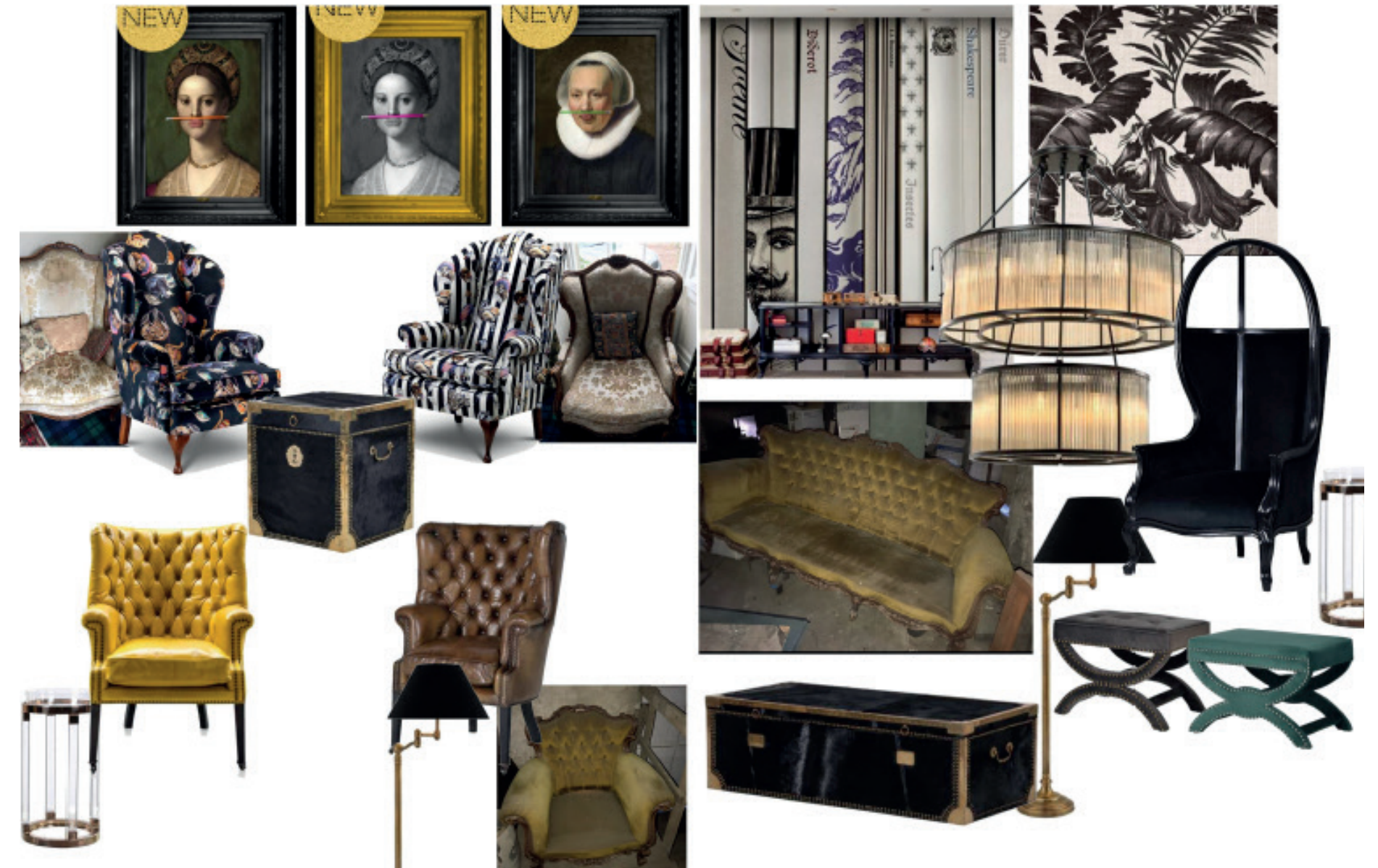


# THE LIBRARY

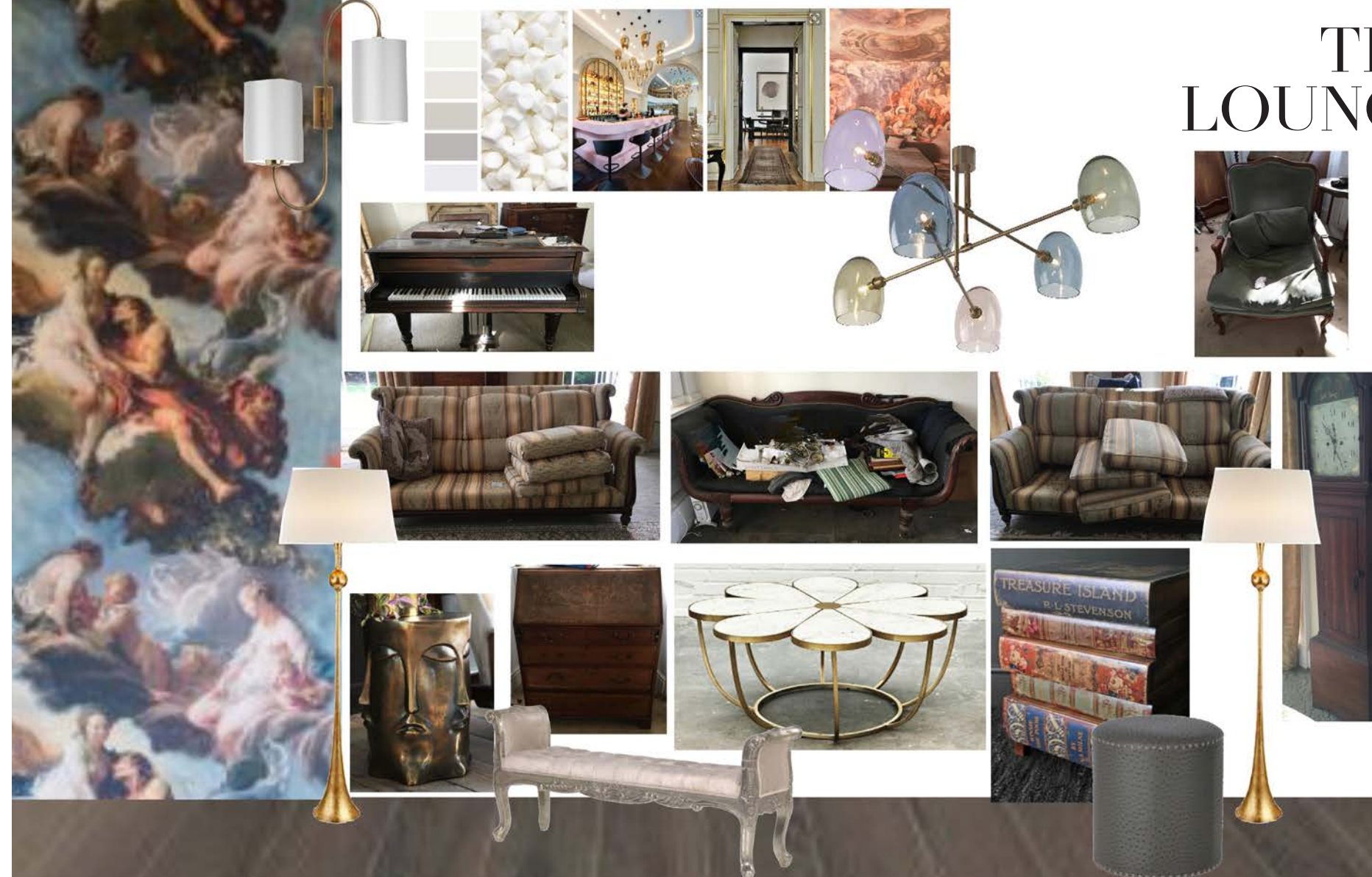
STRAYING AWAY FROM THE NORM

Never one to follow convention, our library breaks all the rules. Vivid colours and charismatic furniture set off the large-scale chandeliers found hanging down from the vast ceiling. Bespoke accessories create the energy and opulence you need in every library to get the party flowing!

Mood lighting, playful art and touches of House of Hackney bring a lot of fun and character to the library at Charlton Hall. Let's embrace the good times to be had here and enjoy as you please!







# THE LOUNGE

# THE BAR



\*Please note these images are indicative of what will appear at Charlton Hall.



# THE VAULTS

A SPEAKEASY VIBE

Let's delve deep underground and enter the hugely surprising suite of vaults at Charlton Hall. This is where you'll find our after-hours playground of debauchery, pop-up bars and where you may just come face to face with Sean Connery and Marilyn Monroe.

Let our in-house speakeasy play host to your perfect chill-out area. We already have high hopes that whisky will be your main choice of tippie as you unwind down here amongst opulent velvet draped booths, leather seating and mirrored tiles.

You really do have to see this to believe it...



\*Please note these images are indicative of what will appear at Charlton Hall.



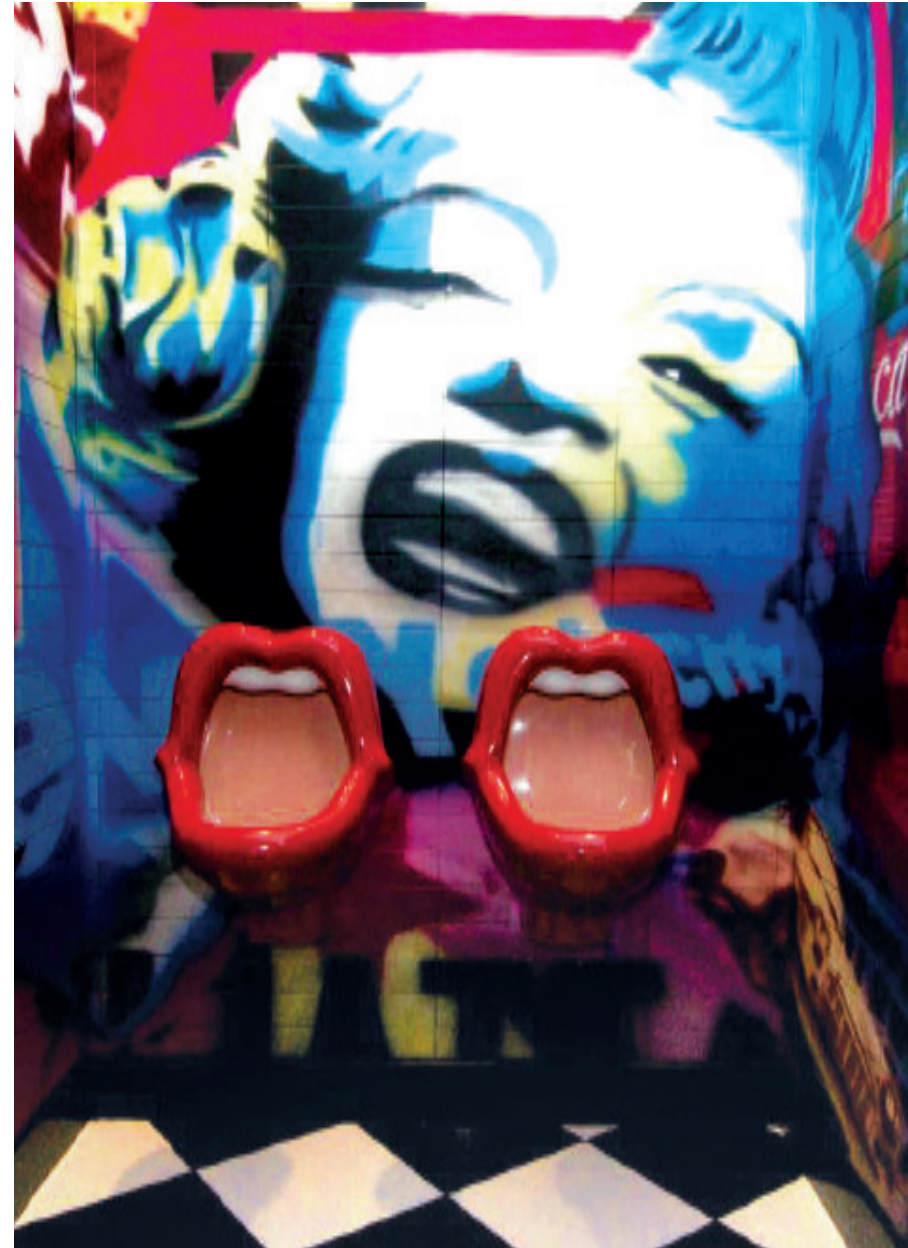
# THE LOOS

RAISING EYE-BROWS

The loos? You might be thinking this is a strange room to talk about... you're not wrong – the loos at Charlton Hall are strange!

Eyebrow-raising urinals combined with bespoke designer graffiti from our amazing artist Lynsey Jean Henderson juxtapose with the Pink Powder room for Foxy Ladies.

Could the loos at Charlton Hall be the most instagrammed room of all? We'll have to wait and see...



\*Please note these images are indicative of what will appear at Charlton Hall.



# THE LANDING

BE BOLD AND ECCENTRIC!

Taking our handmade and specially hand-dyed grand staircase runner upstairs, we lead you past the huge window overlooking the grounds to the upper floor, where the landing promises to lead you to a suite of indulgent bedrooms.

The pure decadence and attention to detail is clear to see, with oversized mirrors reflecting shimmering chandeliers and cherubs swinging from pendants.

As you reach the top of the landing, we've tucked delicate leather conversation sofas away in a little hideaway that looks out towards acres and acres of rolling country grounds within the estate.

Watch out though... walls have ears and you may spot a monkey or two climbing the walls, as this secret little hideaway is lined with naughty monkey wallpaper from House of Hackney...





# THE BEDROOMS

## FILLED WITH CHEEKY CHARACTER

Secretly... we know that parties at Charlton Hall won't end at midnight.

Fear not, we've got your overnight stay covered in the form of six large bedrooms within Charlton Hall itself and a period country cottage with two extra bedrooms within the grounds. In total, we can accommodate up to 16 guests. These are of course exclusively reserved for your stay.

Each suite is named after the next generation of stars linked to Charlton Hall and naturally, they all have their own cheeky character.

Let us introduce you to Charlotte, Alfie, Ella, Lydia, the one without a name (yet), Eliza, Charlie & Daisy.





# CHARLOTTE

## STEALING THE SHOW

Charlotte enjoys the largest en-suite with her super king-sized bed and is tucked away in the quiet part of Charlton Hall.

Not for the faint-hearted, we've created quite a show-stopping suite with neon 'Kiss Me' signs and tantalising tassel wall lights that accompany angelic blush tones of Pierre Frey and Matthew Williamson wallpaper to really steal the show.

Perfect peacock side tables, blush pink chairs and a scroll coffee table set off the beautiful antique dresser within this suite, which has been a resident at Charlton Hall for many many years!

And if you'd like to indulge in a pampering session, we've created an idyllic corner for the perfect boudoir where Emma J Shipley cushions in exciting hues of hot pink and orange will give you all the comfort you need as you sit back and relax.



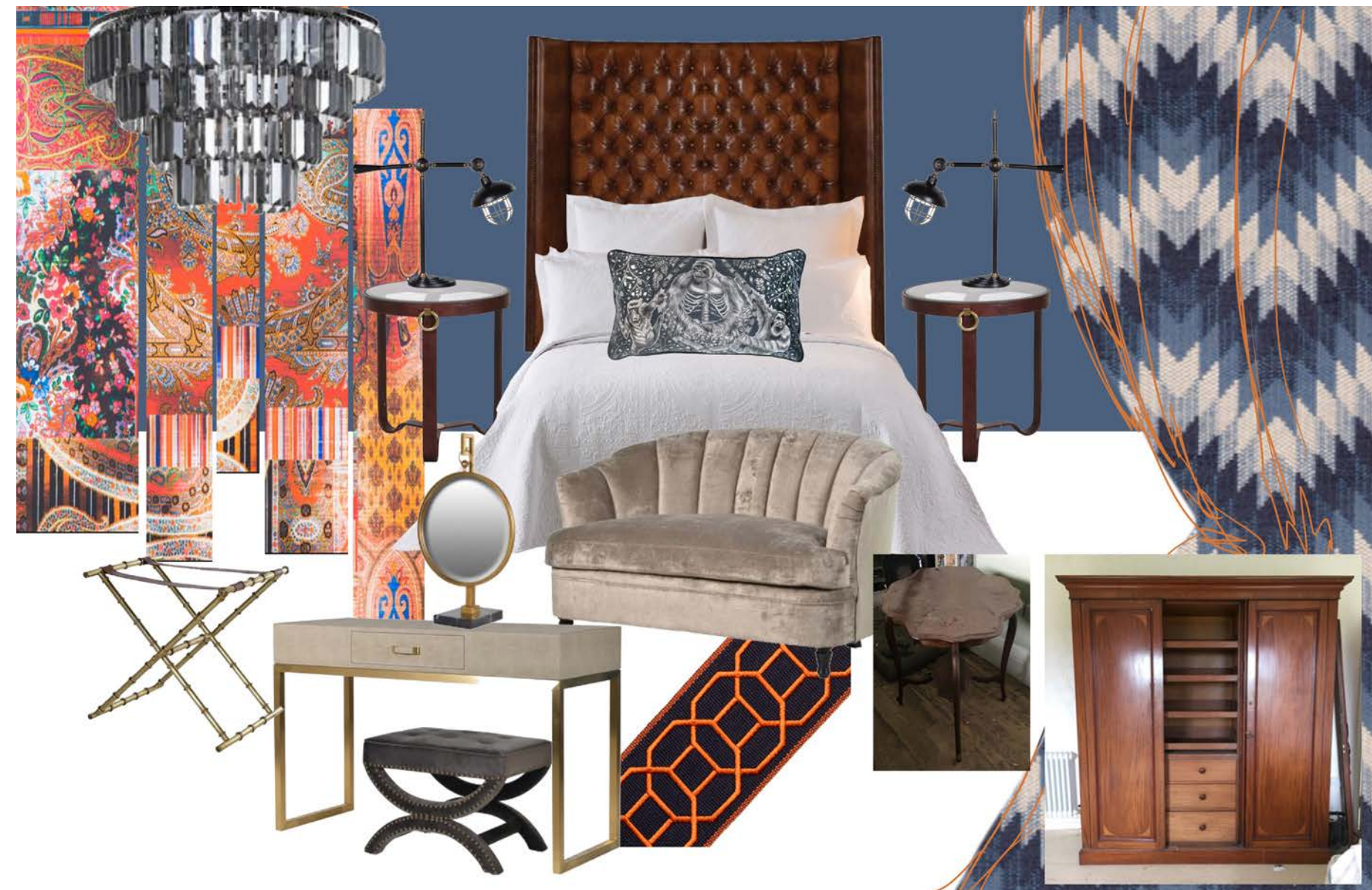


# ALFIE

## THE MASCULINE ONE

Alfie brings a masculine vibe to the upstairs as we introduce tones of deep blue and bold contrasting orange. We've decided to go very opulent in the bathroom and polished the en-suite with bright Lomond Mulberry wallpaper to powerfully draw together the vibrancy of these colours throughout.

You know we love to go overboard (in a good way) so we've been channeling Timothy Oulton's eccentric schemes with reflective glass lights, set to add a shimmer to Alfie's suite. Along with oversized headboards, lamps and cushions this room is a fun, luxurious and indulgent home from home experience.





# ELLA

## NOT ALWAYS AN ANGEL

Beautifully bright and sophisticated, the Ella suite showcases Manuel Canovas wallpaper in a picture Paris city scape of wonderfully stylish apartments.

To mix things up and to add more indulgence, we've added rose gold silk curtains and a pop of yellow Jim Thompson Bargello fabric to the double twin beds.

Ella's suite combines modern pieces with the antique side table dresser and set of wardrobes that have their own history of living in the hall.

Although we try, we can't always be an angel and this is ever more so when you'll see the en-suite bathroom.

You can't fail to miss the cheeky monkeys who live here in the form of yellow House of Hackney Empire wallpaper.

Climbing the walls and having their own party, these monkeys really do bring out Ella's cheeky side.





# LYDIA

## THE LUSTROUS LIVE WIRE

Meet Lydia, the suite we've nicknamed the 'lustrous live wire'! Bathed in Manuel Canovas Dara wallpaper, we've created a statement suite by merging beautiful antique existing furniture seamlessly with enhancing black tones and splashes of colour to boldly set off the suite's fuchsia silk pink curtains.

Lydia's super king size ebony 4 poster bed floats in the middle of the room, where black and white contrast furnishings play host to zebra print weaved chairs, adding even more character to this exceptional suite.





# SUITE 4

## VERY ECCENTRIC TASTE

This naughty one is exciting in itself given that it's not officially named yet! So, we've gone ahead and predicted their character with this suite, which represents more than just an over-the-top fairytale style!

This one is edgy and daring and we have Matthew Williamson and Diane Von Furstenberg furnishings to thank for that!

Kate Spade's influence is responsible for accessorising this suite in blush pink with hues of copper and contrasting dark grey.

To top it all off, a glimmer of gold bees can be seen sitting pride of place courtesy of Gung-Ho in collaboration with Jeffrey's Interiors. The sustainably designed embroidered cushions put Charlton Hall ahead of the times and match the sumptuous tone of this room perfectly.





# ELIZA

## THE SILVER FOX

Eliza is a little silver fox and her personality comes out in abundance with this suite, which is made up of a delicately delicious mix of silvers, rich purples and naughty splashes of green! The king sized bed of burnished silver is dressed with a velvet headboard and complemented by modern side tables playing host to Ted's (the family parrot) table lamps.

Eliza has exceptional taste and is partial to exceptional interior design and so Kate Spade and Emma J. Shipley make guest appearances here... however you'll have to watch this space to see how they've influenced the design in this foxy little room...







## CHARLIE THE SOPHISTICATED GENT

Charlie is a resident of the stable cottage; just a stone's throw away from the main hall itself; where he resides with Daisy.

Charlie's sophisticated personality and keen eye for modern interiors is reflected in this masculine double suite. Hanging pendants sit elegantly over the bed and reflect against the trio of mirrors positioned opposite.

The double bed in Charlie's suite sits masterly in the centre of the room, with an oversized headboard dominating the whole of the wall, whilst the bed softens the interiors here, with an array of designer cushions in rich shades of blue.

## DAISY A GIRLY GIRL

Daisy is every girl's best friend and she always has a spare single bed in her suite, making Daisy's room the only twin here.

Her soft and calming personality is reflected with the colour scheme in natural whites with hints of gold from the dresser.

Daisy's love for animals is clear as you will see with the interiors in this suite, as cheeky animal characters appear on her walls as well as upon her large cushions.

One thing's for sure, you'll never feel alone at Daisy's!







# THE STABLE COTTAGE

LOUNGE

KITCHEN





# CEREMONY HALL

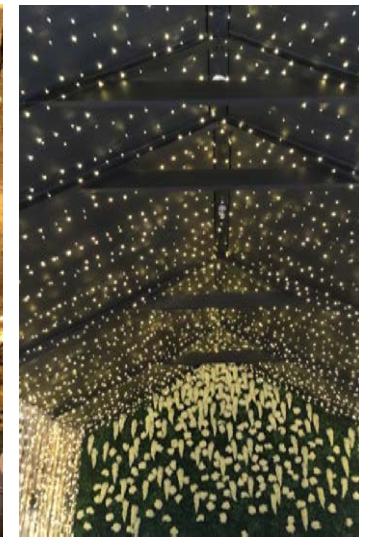
## FAIRY LIGHTS AND FLOWERS

This naughty one is exciting in itself given that it's not officially named yet! So, we've gone ahead and predicted their character with this suite, which represents more than just an over-the-top fairytale style!

This one is edgy and daring and we have Matthew Williamson and Diane Von Furstenberg furnishings to thank for that!

Kate Spade's influence is responsible for accessorising this suite in blush pink with hues of copper and contrasting dark grey.

To top it all off, a glimmer of gold bees can be seen sitting pride of place courtesy of Gung-Ho in collaboration with Jeffrey's Interiors. The sustainably designed embroidered cushions put Charlton Hall ahead of the times and match the sumptuous tone of this room perfectly.





# THE CULINARY EXPERIENCE

As cuisine at Charlton Hall will be served amongst the grandeur of our antique-filled, eccentric Georgian hall, we will reflect this concept in our culinary plans for your stay with us.

We plan to serve traditional dishes with a contemporary twist using the finest, freshest ingredients from locally sourced Northumbrian produce on our doorstep.

As with our sister venue, Doxford Barns, the kitchen at Charlton Hall will be led by an award-winning head chef with a strong pedigree in order to build an impeccable reputation for food served at Charlton Hall.

We aim to deliver a relaxing and luxurious ambience, coupled with flawless service and above all, exquisite food to satisfy even the most discerning palettes.



## SAMPLE MENU

### STARTERS

Wild mushroom, spinach and goats cheese vol-au-vents served with a poached duck egg and pimento cream (V)

Smoked salmon and smooth avocado mousse

Locally sourced seafood chowder with fresh, home baked sourdough

Pheasant popcorn on a bed of black pudding and smoked bacon salad, with a sweet plum sauce dressing

Smooth chicken liver parfait infused with truffle oil served with crisp toasted brioche and caramelised red onion chutney

### INTERMEDIATE

Elderflower and Prosecco Sorbet

Mojito Sorbet

Peach Bellini Sorbet

### MAIN COURSE

Slow roasted loin and braised haunch of Northumberland Estate roe deer with root vegetable mash and an apple and red wine jus

Roasted cod with a luxiourious champagne sauce and sweet honey glaze, served with crisp and crunchy straw potatoes

Goats cheese and beetroot risotto (V)

Moroccan spiced rump of lamb resting on harissa cous cous with chickpea salad, minted raita and crispy deep-fried onions

Succulent glazed duck breast with burnt coconut, pineapple and soy glazed cashews, served over stir fried vegetables

### DESSERT

Rich chocolate fondant with peanut brittle and banana ice cream

Honey, white chocolate and whisky mousse with raspberry confetti

Pineapple and passion fruit Eton mess

Champagne and raspberry posset

A selection of local artisan cheeses with apple jelly, fermented beetroot, celery, wheat wafers, fig and hazelnut bread

Tea

Coffee

Petit Fours



# ORDER OF THE DAY FOR YOUR WEDDING

Suppliers arrival*	1100
Bride and Groom arrival	1200
Residents of Hall and Cottage check-in	1230
Guest arrival	1300
Ceremony	1400 onwards
Drinks Reception	1500 onwards
Wedding Breakfast	1700 onwards
Evening Guest Arrival	1930 onwards
Last Orders for non-residents	0000
Breakfast for residents and non-residents	0900 till 1000
Check-out for residents	1000
Bride and Groom Check out	1100

\*Suppliers can gain access to the ceremony hall from 10am and can access the function room from 11am.

# PRICING

Charlton Hall is available to hire on an exclusive basis with on-site accommodation, consisting of 6 en-suite bedrooms within the Hall and 2 bedrooms within the Stable Cottage. Your exclusive use of Charlton Hall runs from 12 noon on your arrival day until 11am the following morning.\*

<b>LOW SEASON</b> January, February & November	<b>MID SEASON</b> March, October & December	<b>HIGH SEASON</b> April, May, June, July, August & September
<b>Monday - Wednesday</b> £2995 - Exclusive Venue Hire & Accommodation £4500 - Minimum Spend	<b>Monday - Wednesday</b> £4495 - Exclusive Venue Hire & Accommodation £6500 - Minimum Spend	<b>Monday - Wednesday</b> £4995 - Exclusive Venue Hire & Accommodation £7500 - Minimum Spend
<b>Thursday - Sunday</b> £3495 - Exclusive Venue Hire & Accommodation £6500 - Minimum Spend	<b>Thursday - Sunday</b> £4495 - Exclusive Venue Hire & Accommodation £8500 - Minimum Spend	<b>Thursday - Sunday</b> £5495 - Exclusive Venue Hire & Accommodation £8500 - Minimum Spend
		<b>Saturday</b> £6995 - Exclusive Venue Hire & Accommodation £9500 - Minimum Spend

Please enquire for bank holiday pricing.  
\*Please enquire regarding lakeside weddings (May to September).

**CHARLTON HALL PAYMENT - All venue hire, food and drink payments to be paid into the following bank account.**  
**Deposit:** £1000, **Account Name:** Charlton Hall – R J Shell LTD, **Sort Code:** 30-90- 13, **Account Number:** 22523568



# YOUR QUESTIONS ANSWERED

## **Where can you find us?**

Charlton Hall is based just off the A1 at Chathill, eight miles north of Alnwick. Set within a private 150-acre estate overlooking the coast towards Beadnell Bay.

## **Will the Hall be an option for both the ceremony and reception, and how many guests can be catered for?**

Yes. Charlton Hall can cater for up to 100 day guests and 150 evening guests.

## **How will your team assist us in our big day plans?**

In-keeping with our award-winning team from Doxford Barns, we will offer a service level that will include wedding planning, support, supplier and recommendations for collaborations to help you achieve your vision for your day. Whether this is in creating bespoke menus in partnership with our chef, to sourcing entertainment and accessories to complement colour schemes, our team will be there to support you from start to finish.

# FIND OUT MORE

We would love to welcome you to Charlton Hall and show you around ahead of the crowds before our 2018 opening.

Our beautiful venue is the perfect place to kick off your heels, party in style and make unforgettable memories.

Please contact us for more information or to book a viewing.

**Address:** Charlton Hall, Chathill, Alnwick, Northumberland, NE67 5DZ

**Phone:** +44(0)1665 579173

**Email:** [info@charltonhall.co.uk](mailto:info@charltonhall.co.uk)







# CHARLTON HALL



[www.charltonhall.co.uk](http://www.charltonhall.co.uk)

[info@charltonhall.co.uk](mailto:info@charltonhall.co.uk)

01665 579 173